



East Renfrewshire Soccer Development Association

Small-Sided Games
Season Guide 2025



ERSDA small-sided game

east renfrewshire
**CULTURE
& LEISURE**

Dear all,

At ERSDA, our ambition is simple: to create the best possible football development environment for our young players. We follow the National Player Pathway and operate under the rules and regulations of the SYFA and SWF, while embracing the “Let Them Play” philosophy to ensure a positive, player-first experience.

This Season Guide outlines what that means in practical terms for 2025, including:

- Fixtures, scheduling, and team availability – how we plan to structure games.
- Matchday environment – ensuring a safe, enjoyable experience for all.
- Game formats – age-specific adaptations and key playing details.
- Venue organization – how age groups will be structured across locations.

In partnership with ERCL, ERSDA is run entirely by volunteers, and success depends on everyone working together—clubs, teams, supporters, and players alike. Whether you're on the pitch, the sidelines, or behind the scenes, your role matters.

Let's make Season 2025 a great one—together!

The ERSDA Committee





Contacts

Role / Source	If you are looking for...	Contact details
ERSDA website	ERSDA documentation, team templates and fixture information	https://ersda.uk
ERCL website	Pitch booking and availability and venue information	https://www.ercultureandleisure.org/sports-arts/sports-pitches/
ERSDA President	ERSDA structure and constitution queries	Dave Mackay – president@ersda.uk
ERSDA Secretary	Team registrations and permits	Roslynn Davidson – secretary@ersda.uk
ERSDA Vice President	Referee and match official queries	Andy Robertson – vicepresident@ersda.uk
ERSDA Treasurer	Invoicing and team fees	Alan Hay – treasurer@ersda.uk
ERSDA Child Protection Officer	Player wellbeing and PVG-related enquiries	Nikki Winning – childprotectionofficer@ersda.uk
ERSDA Saturday Match Secretary	Boys/mixed match day incident reporting and small-sided game enquiries	Rachel Renfrew – saturdaymatchsecretary@ersda.uk
ERSDA Sunday Match Secretary	SWF fixturing, match day incident reporting and new team enquiries	Roslynn Davidson – sundaymatchsecretary@ersda.uk
Age Group Coordinators	2018 fixtures and scheduling enquiries	Kevin McCarron - coaches only – via age group WhatsApp
	2017 fixtures and scheduling enquiries	Chris Rose- coaches only – via age group WhatsApp
	2016 fixtures and scheduling enquiries	Vikram Vasudeva- coaches only – via age group WhatsApp
	2015 fixtures and scheduling enquiries	Claire Dingwall- coaches only – via age group WhatsApp
	2014 fixtures and scheduling enquiries	Ross Morrin- coaches only – via age group WhatsApp
	2013 fixtures and scheduling enquiries	Brian Forbes - coaches only – via age group WhatsApp
ERCL Support	Coach advice and education; matchday coordinator enquiries	John Gervaise - John.Gervaise@ercultureandleisure.org Peter Dunn - Peter.Dunn@eastrenfrewshire.gov.uk



Fixtures and Scheduling

The Season Planning Approach

Managing Changes to Game Availability

Confirming Games as “on” or “off”



Season Planning Approach

Fixtures in advance – 4-5 weeks at a time

In Season 2025, we are continuing to use 6-block fixture schedules, with each block covering 4-5 weeks of pre-planned fixtures. This response received positive feedback last season by giving greater visibility of fixtures, allowing teams to plan ahead.

How It Works

Each fixture block is issued in advance, providing clarity on schedules.

Fixtures will be fixed within each block—age group coordinators will not be able to adjust week-on-week based on team availability. Fixture swaps may be possible with sufficient notice, but:

Requests must be made at least 4 days in advance.

Changes depend on agreement from all affected teams.

Swaps are not guaranteed due to limited pitch capacity.

Why This Approach?

- Massive scheduling task – In Block 1 alone, c.285 teams will play over 1500 fixtures over 5 weeks.
- High pitch utilization – We're operating at 99% pitch capacity, making flexibility difficult.
- Fairness & transparency – All clubs receive the same fixture information at the same time, ensuring an even playing field.

How Fixtures Will Be Shared

- WhatsApp (age group coordinators)
- ERSDA Website – ersda.uk

We appreciate everyone's cooperation in making this system work—it ensures smoother planning, better matchday experiences, and fair scheduling for all teams.

east renfrewshire
**CULTURE
& LEISURE**

Block 1 – 5 rounds

1/3/25 – 30/3/25

Block 2 – 4 rounds

27/4/25 – 25/5/25

Block 3 – 4 rounds

31/05/25 – 22/6/25

Block 4

16/8/25 – 14/9/25

Block 5

20/9/25 – 26/10/25

Block 6

01/11/25 – 30/11/25

Non-Playing Weekends

April– 5th/6th; 12/13th, 19th/20th

May*– 24th/25th

June– 28th/29th

No games in July

August– 2nd/3rd; 9th/10th

September– 27th/28th

October– 11th/12th; 18th/19th

*limited availability 3rd May – explained later in this document, in the Venue & Age Group section



Managing Changes to Game Availability

Making sure that everyone knows what is happening

east renfrewshire
**CULTURE
& LEISURE**

Matchday Guidelines

Before Matchday

- If your team is unable to fulfill its allocated fixture, please notify your fixture coordinator as early as possible. They will:
 - Explore fixture swaps if feasible.
 - Arrange an alternative fixture for your opponents if your team is unavailable.

On Matchday

- If unforeseen circumstances delay your team or prevent attendance, the team secretary should immediately:
- Post a status update in the age group WhatsApp group.
- Inform opposition teams and coordinators, allowing them to manage the players present.

No-Show Policy

- If a team fails to attend a fixture without prior notice, ERSDA will follow up with the club secretary to review the situation.
- Teams should expect to have to miss a future match day as a consequence of not showing up and not letting anyone know in advance





Confirming Games as “on” or “off”

Determining whether pitches are **playable** can be challenging, but our priority is always to **get games played where possible** while ensuring **player safety** and following the **protocols set by our pitch provider (ERCL)**.

For **Season 2025**, we will adopt the following approach to confirming **suitable playing conditions**:

Our commitment is to **balancing fairness, safety, and playability**, ensuring that decisions are made **transparently and in the best interests of all involved**.

Part 1 – ERCL inspection

Before 5pm on a Friday night, ERCL will inspect pitches, and confirm the status of pitches via the [ERCL website](#) and [X account](#)

If the pitches are declared OFF on Friday, then they will definitely be off on the Saturday/Sunday.

If the pitches are declared ON by ERCL on a Friday, there will be no further update until Saturday morning.

Part 2 – Making the call at game time

Whilst we hope all fixtures will remain on after a Friday inspection, we will apply 3 playability tests to each game:

- Is the pitch safely playable?
- Will the pitch be unduly damaged by further play?
- Are the weather conditions tolerable for safe grassroots play?

We will strive to apply these tests consistently across venues. If conditions change during the morning of fixtures, and games become unplayable, the earliest possible notice of cancellation will be given to all teams yet to play via a WhatsApp age group message.

On game day, consider fixtures ON unless informed otherwise



Matchday environment

- Creating a safe and positive matchday
- Matchday behaviour charter
- Team Obligations
- Reporting Discrimination
- 5, 7 and 9-a-side pitch set up
- Support from matchday coordinators
- Managing matchday logistics



Ensuring a Safe and Positive Matchday

Charter, Pitch Guidance, Disciplinary Follow-Up and Matchday Coordinators

east renfrewshire
**CULTURE
& LEISURE**

For Season 2025, we are committed to ensuring a safe, positive, and enjoyable matchday experience for all. To achieve this, we will be following these key principles:

1. Matchday Charter

All coaches and supporters are expected to read and follow the ERSDA Matchday Charter (*see next page*).

2. Supporter & Pitch Setup Guidelines

- 4-a-side games: Supporters must remain outside the cages at Pro-Soccer and Woodfarm.
- 5, 7, and 9-a-side games: Teams must follow the pitch set-up (outlined later in this guide), based on SFA good practice guidelines.

3. Matchday Coordinators & Matchday Reports

Each venue will have an ERSDA Matchday Coordinator responsible for:

- Observing that the Matchday Charter & pitch arrangements are consistently followed.
- Preparing a Matchday Conduct Report, noting both positive sporting moments and any issues.

Anyone attending a match can also provide feedback by emailing:

✉ saturdaymatchsecretary@ersda.uk

✉ sundaymatchsecretary@ersda.uk

4. Responsibility for Conduct & Disciplinary Approach

Clubs are responsible for ensuring the appropriate conduct of their coaches and supporters.

While the vast majority of ERSDA games were incident-free last season, there were exceptions where coach or supporter behaviour was unacceptable.

When incidents are reported:

- ERSDA will follow up with club and team secretaries of those involved.
- The ERSDA Disciplinary Committee will record events and responses, and may impose sanctions depending on the nature of the incident.
- Repeat offenses may be escalated to the SYFA for further action.
- All actions will follow SYFA disciplinary procedures.

We hope never to need these measures, but we will apply them consistently if required. It is important that all clubs understand these expectations before the season begins.



ERSDA Matchday Behaviour Charter

The standards to which we'll hold ourselves during games

east renfrewshire
**CULTURE
& LEISURE**

We pride ourselves on working together to create a positive environment for our young people to enjoy their football. So there is no doubt as to what that means, we've drawn on the SFA's "Let Them Play" guidelines to make a match day charter for coaches and supporters. Thank you in advance for helping us put it into practice.

Coaches

- Have the well-being, safety and enjoyment of players as a top priority
- Never tolerate any form of bullying or abuse
- Help players improve with feedback and coaching, not making all their decisions for them
- Encourage fair play & high standards of behaviour
- Always show respect to everyone involved in the game
- Respect the decisions of other coaches
- Don't gloat or antagonise the opposition
- Don't address opposition players or supporters not adhering to the code of conduct – leave that to the opposition coaches
- Remind fellow coaches and supporters from your team only of their obligations if matters get heated
- Absolutely no use of swearing or abusive/ threatening language

Supporters

- When spectating, stay in the designated supporter area for your pitch facility
- Applaud good play and celebrate if a goal is scored
- Let the players play – its their game
- Be a role model for your player in how you talk and act around the game
- Respect the coaches' decisions & don't shout at them – without them volunteering there would be no game
- Don't approach any member of the opposition coaches, players or supporters at any point with aggression or negativity
- Don't shout instructions – the team already has a set of coaches
- Try to have fun and enjoy watching your player play
- Absolutely no use of swearing or abusive/ threatening language



Important Team obligations

Meeting requirements set by our national association

east renfrewshire
**CULTURE
& LEISURE**

In the small-sided game, the rules set out by our national association, the SYFA, state that:

- At each matchday activity, 2 officials must be present for each team.
- Between them, these 2 officials must be able to cover the roles of team secretary, a 1.2 qualified coach, and a first aider.
- Officials must be registered in COMET, which means they will have completed all the relevant checks and courses to ensure child safety standards are met.
- We are aware that these standards have not always been followed. The introduction of COMET means that pitch-side checks will now be possible. As communicated extensively last season, these requirements will be actively monitored from season 2025 onwards.
- If a team is found not have the appropriate representation of club officials on a matchday, then the game will be abandoned, and a disciplinary follow up conducted in line with SYFA guidelines.
- If there are any difficulties in coach availability approaching matchday, or on the day, then please talk to the matchday coordinators. Don't just play, hoping to not get caught out.
- Teams are also reminded that they are responsible for the behaviour of their supporters and anyone on the touchline.
- Please work with us to meet the minimum obligations set by the governing body. We hope to make season 2025 a disciplinary free season!

(p.s. it may take block 1 of fixtures for the systems to embed, and we'll work with clubs and match day coordinators on teething difficulties with the COMET system during this time)

Key Extracts from the SYFA supplementary and playing rules (2024)

https://www.scottishyouthfa.co.uk/images/Information-Downloads/Football-Games-and-Tournaments/Supplementary-and-Playing-Rules/Supplementary_Playing_Rules_2024-2025.pdf

22.2 Teams

All teams in membership must have at least two registered officials present during all team activities and must fill the following positions as a minimum: Team Secretary, First Aider and Coach. The Coach must be in possession of a current Scottish Football Association Coaching Certificate or FIFA recognised equivalent. The minimum Certificate is as follows:

For teams up to and including age 12: Children's Coaching Certificate (1.2)

For teams age 13 and over: Youth/Adult Coaching Certificate (1.2)

The First Aider must have a current SYFA recognised First Aid Certificate. A first aider must be present during all club or team activities, together with an appropriately stocked first aid kit. If the team's First Aider is unavailable for any reason during a fixture, the team should seek permission from their opposition to provide first aid cover and the teamline signed accordingly.

76 Clubs, leagues and associations must ensure the safety, good conduct and behaviour of its supporters before, during or at the conclusion of any match. In any match the home team, league or association must ensure the safety, good conduct and behaviour of all supporters before, during or at the conclusion of any match. The foregoing applies to all matches authorised by or matches played under the jurisdiction of SYFA.

In the event of misbehaviour of supporters being reported to or otherwise being brought to the attention of SYFA, a league or association, SYFA, a league or association will have jurisdiction to deal with the matter and to impose sanctions in respect thereof as prescribed within SYFA Disciplinary Procedures.

Each club, team, league or association must ensure that its players, officials, supporters and any person exercising a function for or in connection with the club, team, league or association do not engage in unacceptable conduct.



Reporting Discrimination

Tackling this issue head on

east renfrewshire
**CULTURE
& LEISURE**

- ERSDA stands against discriminatory behaviour or conduct of any kind and will strive to eliminate it in all forms from our game
- In 2024, we tried some new approaches to address discriminatory behaviour. From those efforts, we had hard learnings about what works and what doesn't work.
- Based on those experiences, in season 2025, we request all parents, coaches and officials join with us in following the procedure below.
- In the event of discriminatory behaviour being observed or reported to be observed by a player or parent to a club official:
 1. A club official should contact the small sided game secretary immediately, detailing as accurately as possible the nature of reported incident (location, teams, time, venue, description of reported incident).
 2. Working with the ERSDA CWPO, the small-sided game secretary will contact both club secretaries and CWPOs, and ask them to collect details from those alleged to be involved, and any parents or match officials in attendance
 3. A disciplinary review will then be conducted by ERSDA in line with SFA and SYFA guidelines, and both clubs informed of the outcomes as soon as possible
 4. Simultaneously, a report of the incident will be requested to be logged on the SFA's formal system (link below) by the club raising the incident. This may lead to further investigative activities

<https://www.scottishfa.co.uk/football-development/attractive-game/discrimination-reporting-form/>

- ERSDA welcome contact from anyone associated with the league that has ideas, resources or contacts for how we can address discrimination effectively.
- Please contact your matchday secretary if you have any concerns or questions about this matter.





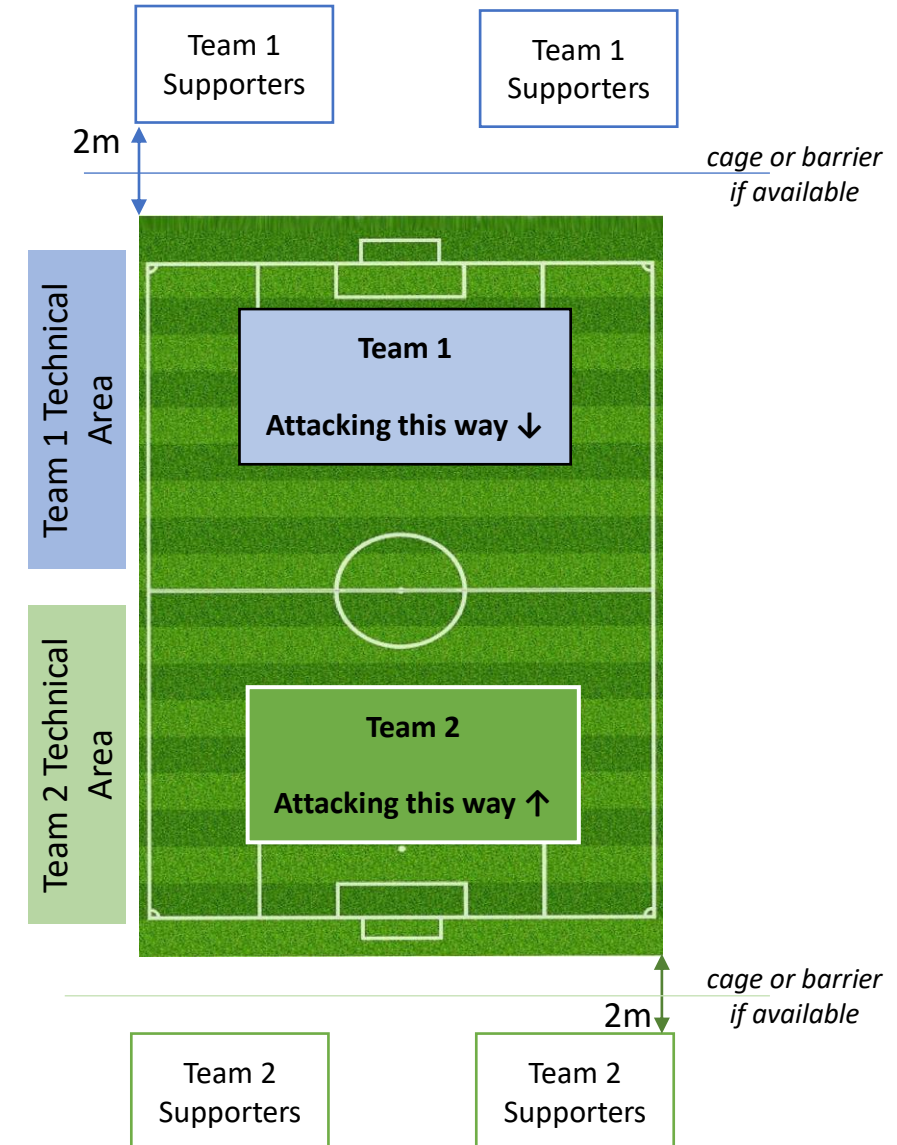
ERSDA 5, 7 & 9 a side Pitch Set-up

Minimising the potential for touchline issues with an agreed set-up

east renfrewshire
**CULTURE
& LEISURE**

1. Before kick-off, each team takes an end of the pitch for all their coaches, subs and supporters.
2. It is **up to coaches** to instruct their supporters where they should stand. If there is a cage or barrier, supporters should remain behind it, outside the playing area.
3. Where there is no barrier or cage, supporters must be 2m back from the edge of the pitch and not directly behind the goal.
4. The only exception is where accessibility needs or pitch facilities do not allow this ... in this case supporters should be as close to 2m back from the pitch as possible
5. Both sides have a technical area which, for simplicity, is one half of the pitch, from the halfway line to the goal line.
6. Each team should have a different half of the pitch for their technical area for the whole game.
7. Coaches and substitutes must stay in their technical area, and supporters are not permitted to enter the technical area.
8. First aiders may enter the field of play during a game to administer first aid if required.
9. At no point during the game should any coach or supporter enter the field of play, or the opposition technical or supporter area.

This guidance is based on an SFA best practice design. Teams are encouraged to collaborate in applying common sense to good pitch set up.





Support from Matchday Coordinators

Matchday officials to help things run smoothly

east renfrewshire
**CULTURE
& LEISURE**

Matchday Coordinators are officials provided by our partners, East Renfrewshire Culture and Leisure (ERCL). They will be easily identifiable at venues and play a vital role in ensuring the smooth running of matchdays.

Role & Responsibilities

The primary aim of the Matchday Coordinator role is to support the delivery of ERSDA small-sided football opportunities for all, and ensure a fun, safe, and educational environment for all participants.

Support & Guidance

Coaches, supporters, and players are welcome to approach Matchday Coordinators with questions about game formats or venue setups.

They will observe proceedings, providing feedback and advice to support the smooth flow of games.

Matchday Coordinators will also be added to age group WhatsApp chat groups.

Specific Duties

For 4 and 5-a-side games, Matchday Coordinators will manage the timing, using a hooter or whistle to signal the start and end of game time.

They will complete matchday reports, similar to referees, and are required to report any incidents or issues.

They may also highlight positive examples of good sporting conduct!

Respect for Matchday Coordinators

We ask that players, coaches, and supporters treat Matchday Coordinators as match officials, as defined by the SYFA, showing respect for them and their instructions on matchday.





Managing Matchday Logistics

east renfrewshire
**CULTURE
& LEISURE**



Saturday or Sunday Fixtures

- Boys/Mixed Game Fixtures: Saturday only
- Girls Game Fixtures: Sunday only
- Playing weekends and holiday weekends will be the same for all teams



Road Closure Alert: Plan Additional Journey Time

- The Aurs Road at Darnley Dams will be closed until Summer 2025.
- Please allow extra travel time when attending Cowan Park and St Luke's venues.



Grass Pitches: Setting Up & Taking Down Goals

- First teams on the pitch: Retrieve goal equipment from the goal store and set up prior to the match (ideally one set of goals per team)
- Last teams off the pitch: Take down goals and return equipment to the goal store.
- Time management: Allow at least 15 minutes for setup and takedown.
- Pro Tip: Ask specific parents to help, rather than a general call-out, to ensure support.



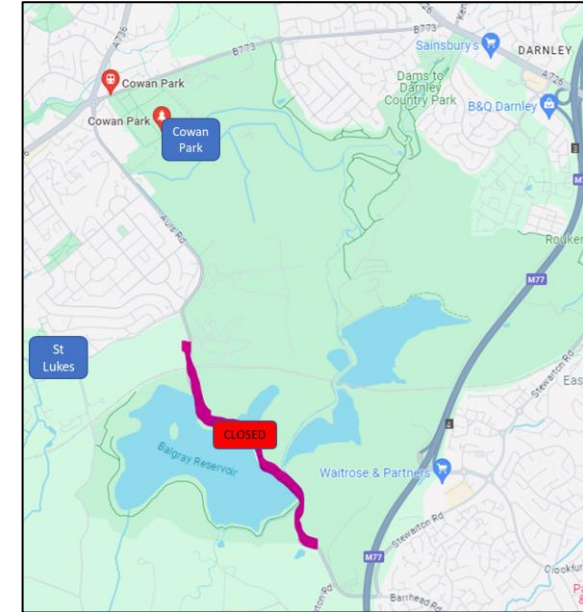
Bring Your Own Footballs

- Match balls are not provided at games. Please check the National Player Pathway page for the correct ball size for your age group. Each team should bring footballs for warm-up and potential match use.



Referee Match Fee (9-a-side games)

- For 9-a-side matches, a referee fee of £36 applies (split between the teams). The fee should be paid directly to the referee before kick-off.



Touchline Team Requirements

- Follow SYFA playing rules (Section 22.2) for touchline representation of coaches and first aiders.
- If sharing first-aid representation, ensure first-aiders know and agree to arrangements before match activities begin.



Ensure WhatsApp Group Representation

- Every matchday, make sure your team is represented in the age group WhatsApp group. The group will also include Fixture Coordinators and Matchday Coordinators



east renfrewshire
**CULTURE
& LEISURE**

Game Format

The National Player Journey



east renfrewshire
**CULTURE
& LEISURE**

They define the player journey opposite. This is how we organize the age groups at ERSDA.

The following pages give the detailed rules that govern the different playing formats. They should be followed exactly in small-sided fixtures.

For more information and resources on this, visit:

<https://www.scottishfa.co.uk/football-development/participation/childrens-youth-football/player-journey/>



National Player Journey (1/3)

Game standards and formats

east renfrewshire
**CULTURE
& LEISURE**

The national player journey is how the SFA asks us to run the game. This table is a summary of the rules and guidelines for each age group.

SMALL SIDED GAMES FORMATS & RULES 2025									
	YEAR OF BIRTH	2019	2018	2017	2016	2015	2014		2013
♀	SWF	U7	U7	U8	U10	U10	U12	U12	U12
👟	MAX PERMITTED FORMAT	4v4 Multi Game	4v4	5v5	7v7	7v7	7v7	9v9	9v9
👕	ADVISED MAXIMUM GAME-DAY SQUAD	6	6	7	10	10	10	14	14
📅	PLAYING SEASON	March to November	March to November	March to November	March to November	March to November	March to May Transition to 9s June 2025	June 2025 to May 2026	March to June Transition to 11s May 2025
⚽	BALL SIZE	3	3	3	4 Boys 3 Girls	4 Boys 3 Girls	4	4	4
🚩	OFFSIDE	✗	✗	✗	✗	✗	✗	✓	✓
👤	THROW INS	✗	✗	✗	✗	✗	✓	✓	✓

Note, the Girls game organises by different age groups to the Boys/Mixed game

For more information and resources on the journey, please follow the link below:

<https://www.scottishfa.co.uk/football-development/participation/childrens-youth-football/player-journey/>



National Player Journey (2/3)

Game standards and formats

east renfrewshire
**CULTURE
& LEISURE**

The national player journey is how the SFA asks us to run the game. This table is a summary of the rules and guidelines for each age group.

SMALL SIDED GAMES FORMATS & RULES 2025									
	YEAR OF BIRTH	2019	2018	2017	2016	2015	2014		2013
♀	SWF	U7	U7	U8	U10	U10	U12	U12	U12
⚽	KICK INS	✓	✓	✓	✓	✓	✗	✗	✗
⚽	DRIBBLE IN	✓	✓	✓	✗	✗	✗	✗	✗
👏	PASS BACK RULE APPLIED	✗	✗	✗	✗	✗	✗	✓	✓
👤	FREE KICKS	Indirect	Indirect	Indirect	Indirect	Indirect	Indirect	Indirect	Indirect
🚩	CORNERS	Short	Short	Short	Short	Short	Short	Short	Short
➡	RETREATING LINE	✗ But Halfway after a goal	✗ But Halfway after a goal	✗ But Halfway after a goal	✓	✓	✓	✗	✗

Note, the Girls game organises by different age groups to the Boys/Mixed game

For more information and resources on the journey, please follow the link below:

<https://www.scottishfa.co.uk/football-development/participation/childrens-youth-football/player-journey/>



National Player Journey (3/3)

Game standards and formats

east renfrewshire
**CULTURE
& LEISURE**

The national player journey is how the SFA asks us to run the game. This table is a summary of the rules and guidelines for each age group.

SMALL SIDED GAMES FORMATS & RULES 2025									
	YEAR OF BIRTH	2019	2018	2017	2016	2015	2014		2013
♀	SWF	U7	U7	U8	U10	U10	U12	U12	U12
🔄	SUBSTITUTES	Rolling	Rolling	Rolling	Rolling	Rolling	Rolling	Rolling	Rolling
🕒	MAX LENGTH OF GAME	10 mins (Max 4 games)	10 mins (Max 4 games)	2x 10mins x 2 or 3 x 15mins	2x 20mins or 3 x 15mins	2x 25mins or 3 x 15mins	2x 25mins or 3 x 15mins	2x 30mins	2x 30mins
📢	REFEREE	×	×	×	×	×	×	Optional	Optional
🏆	TROPHY / RESULTS	×	×	×	×	×	×	×	×
🏟️	MAX PITCH DIMENSIONS	20 x 30m	20 x 30m	30 x 40m	36 - 45m x 55 - 65m 13m retreating line	36 - 45m x 55 - 65m	36 - 45m x 55 - 65m	42 - 47m x 65 - 75m	42 - 47m x 65 - 75m
🥅	MAX GOAL SIZE	2.5 x 1.2m (8ft x 4ft)	2.5 x 1.2m (8ft x 4ft)	4.9 x 1.8m (16ft x 6ft)	4.9 x 1.8m (16ft x 6ft)	4.9 x 1.8m (16ft x 6ft)	4.9 x 1.8m (16ft x 6ft)	4.9 x 1.8m (16ft x 6ft)	4.9 x 1.8m (16ft x 6ft)

Note, the Girls game organises by different age groups to the Boys/Mixed game

For more information and resources on the journey, please follow the link below:

<https://www.scottishfa.co.uk/football-development/participation/childrens-youth-football/player-journey/>



Venue and Age Group Info

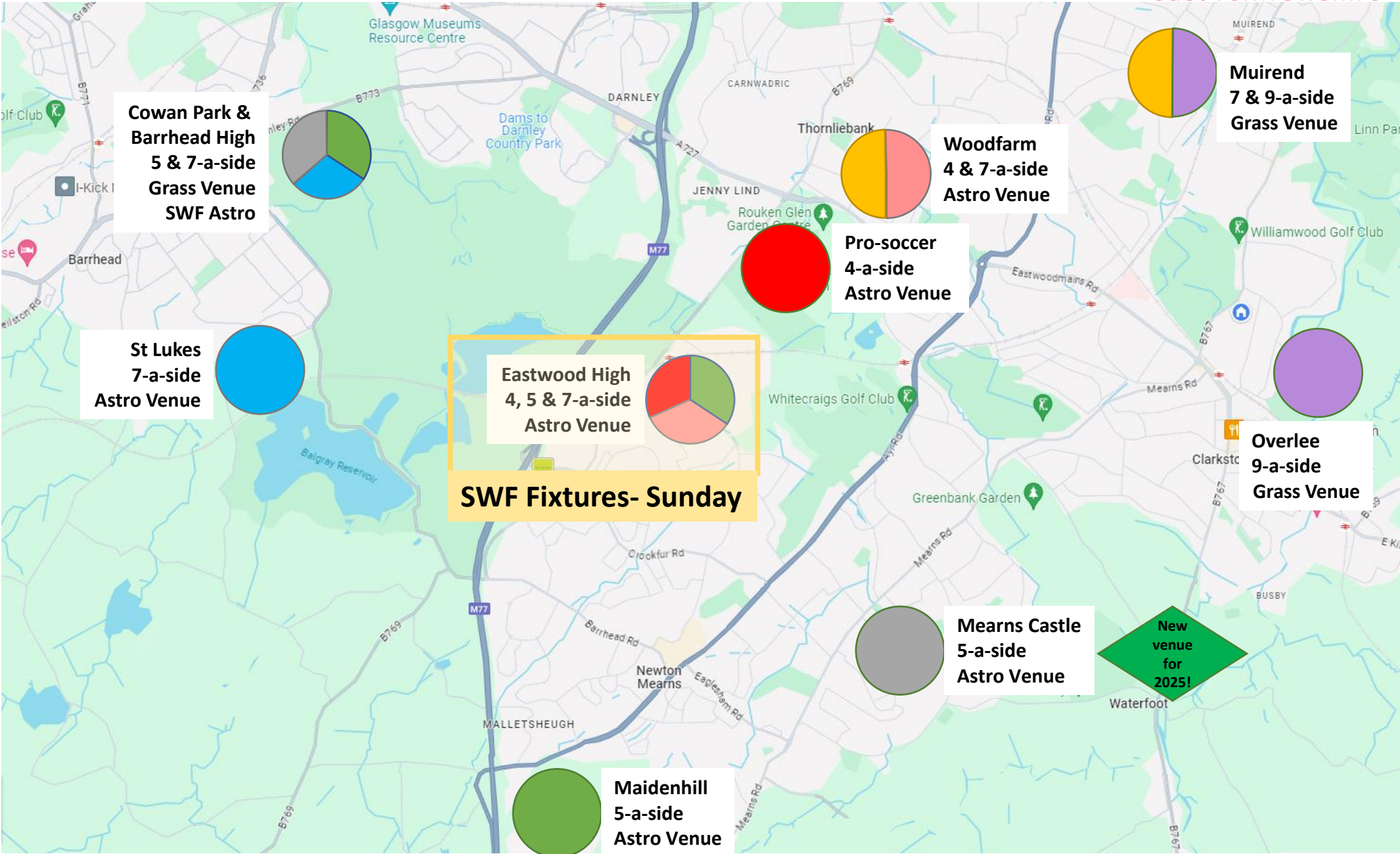
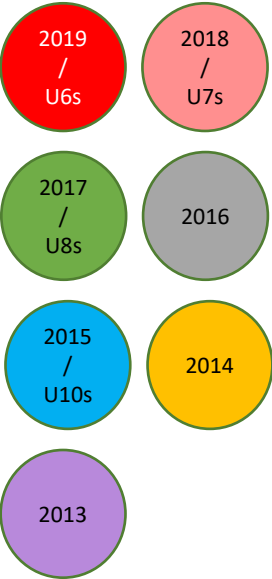
Venue Map

Matchday Dates

Age group (2013-2019) format summaries



Small-
sided
game
venues





Match Day Dates: March to June 2025

Saturday's (SYFA)	Sunday's (SWF)	Holiday Dates
March - 1 st , 8 th , 15 th , 22 nd , 29 th	March – 2 nd , 9 th , 16 th , 23 rd , 30 th	3,4,10,11 August
April – 27 th	April – 28 th	28, 29 September
May – *3 rd , 10 th , 17 th , 31 st	May – 4 th , 11 th , 18 th	12, 13, 19, 30 October
June – 7 th , 14 th , 21 st	June – 1 st , 8 th , 15 th , 22 nd	

Block 1 – 5 rounds
1/3/25 – 30/3/25

Block 2 – 4 rounds
27/4/25 – 25/5/25

Block 3 – 4 rounds
31/05/25 – 22/6/25

Non-Playing Weekends

April– 5th/6th; 12/13th, 19th/20th
May– 24th/25th
June– 28th/29th
No games in July

** 3rd May – Limited Venue Availability

Several of our usual Astro venues will be unavailable on the 3rd May with the Bank Holiday – facilities are closed at St Lukes, Mearns Castle and Maidenhill.

Traditionally, we have seen high drop out for these dates given limited player availability. A check of team availability will be done mid-April for affected venues

A schedule for play on grass will be prepared for available teams. If oversubscribed, then a ballot will be used to decide fixturing.



Format Guide – 2019

Where and When	Pro-Soccer – 9-1pm Astro pitches only A team's allocated 1 hr slot will vary– check the fixture schedule for details each week.
Details	<ul style="list-style-type: none">➤ 2019 games are held on astro pitches at Pro Soccer at Rouken Glen - G46 7UG➤ Pitches are marked out using cones and fun 4 size bownet goals.➤ In advance of the 9am kick off , 1 coach from each team should collect a pre-built bownet for their pitch. On conclusion of the final fixture at 1pm 1 coach from each team should return the bownet to the storage container for the MDC to dismantle and put away. Coaches are requested not to fold away bownets.➤ At Pro-soccer ERSDA matches will take place on pitches 4,5,6 and 8, between 9am and 1pm➤ Teams are assigned an hour slot which can change week on week as detailed in the fixtures➤ Games are 10 mins long, with 3 mins in between to go to the next game➤ An ERSDA matchday coordinator will use a hooter to let you know when to start and stop games➤ At the end of a game, high five the opposition and then go straight to next pitch before team talks➤ At pro-soccer, the boards are not in play. When the ball goes over the touchline it is an opposition dribble or kick-in➤ All players must wear shin guards, wear a team strip or bib, and bring a drink➤ Coaches should not stand directly behind the goals➤ All supporters to remain outside the cage at all times at pro-soccer. This was infringed often at the start of last season.➤ The Pro-Soccer clubhouse has changing rooms, toilets and catering facilities➤ Coaches should make sure players don't act as 'goalkeepers'. Its not fair on the other team, and not good for the player... encourage them to move forward from the goal as if there was a 3m 'D' around it.➤ Fun, encouragement and positivity is the order of the day!➤ At the end of the 1pm slot, teams are requested to help the matchday coordinator put the equipment into the store



ERSDA Pitch Map 2025: Pro-Soccer

east renfrewshire
**CULTURE
& LEISURE**

Venue Info

Age Group: 2019

Game format: 4v4

Surface: Astro

Postcode: G46 7UG





Format Guide – 2018

Where	Woodfarm – Astro pitches only - G46 7HG
When	Saturdays between 9am and 12pm for all games. A team's allocated 1 hr slot will vary– check the fixture schedule for details each week.
Details	<ul style="list-style-type: none">➤ Pitches are marked out using cones and fun 4 size goals➤ Matches will take place on pitches A1 – D2 (see next page). Note the letter indicators at pitch side.➤ Teams are assigned an hour slot which can change week on week as detailed in the fixtures➤ In advance of the 9am kick off , the MDC will line pitches with cones. On arrival for the 9am kick off 1 coach from each team should collect a metal soccer 4's goal from the storage area within Woodfarm pavilion and take this to their first pitch and set up. On conclusion of the final fixture at 12pm 1 coach from each team should return the metal soccer 4's goal to the storage area within Woodfarm pavilion. The MDC can provide direction if required.➤ Games are 10 mins long, with 4 mins in between to go to the next game➤ An ERSDA matchday coordinator will use a hooter to let you know when to start and stop games➤ At the end of a game, high five the opposition and then go straight to next pitch before team talks➤ When the ball goes over the touchline it is an opposition dribble or kick in➤ Coaches should instruct only their own players not to act as 'goalkeepers' positioned in front of the goals, and give them feedback during games to 'move out' if they are repeatedly within c.3m of the goal.➤ All players must wear shin guards, wear a team strip or bib, and bring a drink➤ Coaches should not stand directly behind the goals➤ All supporters to remain behind the barrier or fence at all times➤ The clubhouse has changing rooms and toilets➤ Arriving teams have access to two of the 5-a-side cages for warm-up. Please use considerately.➤ Matchday parking gets really busy – please take care and ensure access is not obstructed. Additional parking is available in the Woodfarm High school car park across the road from the pitches.➤ Fun, encouragement and positivity is the order of the day!



ERSDA Pitch Map 2025: Woodfarm

east renfrewshire
**CULTURE
& LEISURE**

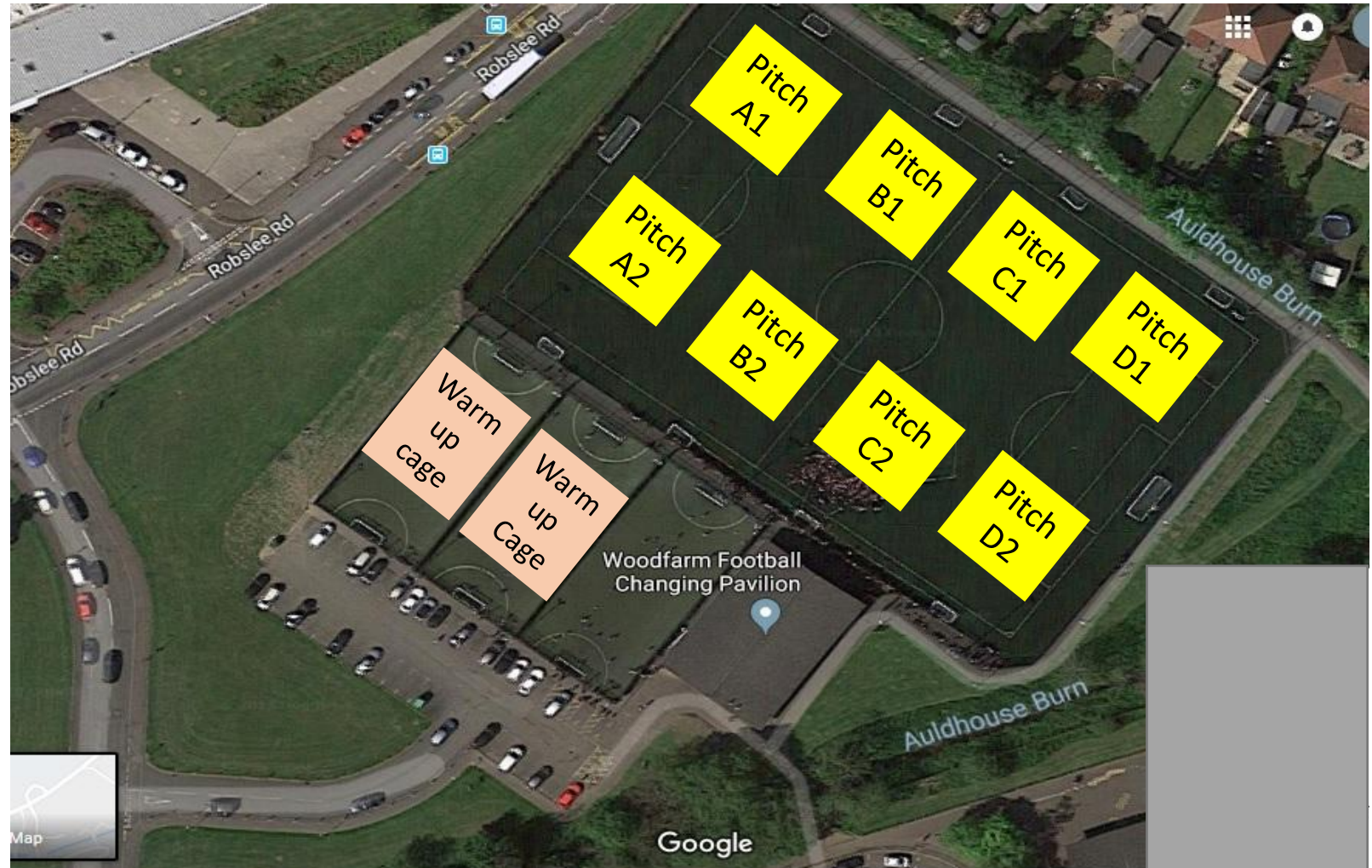
Venue Info

Age Group: 2018

Game format: 4v4

Surface: Astro

Postcode: G46 7HG





Format Guide – 2017

Where	Maidenhill – Astro pitches Cowan Park – Grass pitches
When	Saturdays between 9am and 1pm for all games. A team's allocated 1 hr slot and location will vary– check the fixture schedule for details each week.
Details	<ul style="list-style-type: none">➤ 2017 games will be held on either Astro pitches (Maidenhill) or Grass pitches (Cowan Park)➤ Pitches are marked out with lines on grass, or using cones on Astro, and with 5-a-side size goals. Bownets will be used at Maidenhill.➤ In advance of the 9am kick off , 1 coach from each team should collect a pre-built bownet from the MDC for their pitch. On conclusion of the final fixture at 1pm, 1 coach from each team should return the bownet to the MDC for the MDC to dismantle and put away. Coaches are requested not to fold away bownets.➤ Teams are assigned an hour slot which can change week on week as detailed in the fixtures➤ Games are 15 mins long, with 5 mins in between to go to the next game pitch➤ Fun, encouragement and positivity is the order of the day!➤ An ERSDA matchday coordinator will use a hooter to let you know when to start and stop games➤ At the end of a game, high five the opposition and then go straight to next pitch before team talks➤ All players must wear shin guards, wear a team strip or bib, and bring a drink➤ Coaches and supporters should follow the pitch set-up guide for where to stand at Cowan Park➤ At Maidenhill, supporters should also remain outside the cage at all times➤ The school has toilet facilities for players and coaches which are accessed by key fob – speak to the matchday coordinator for the fob.➤ Please park responsibly when attending Cowan Park – it gets busy at matchday and it is crucial that access routes remain open. Do not park on Dubbs Road to avoid receiving a parking ticket.➤ Note that the Aurs Road will be closed this season at the Dams. Please plan additional time for the journey and expect additional busyness



ERSDA Pitch Map 2025: Maidenhill P.S.

east renfrewshire
**CULTURE
& LEISURE**

Venue Info

Age Group: 2017

Game format: 5v5

Surface: Astro

Postcode: G77 6RT





ERSDA Pitch Map 2025: Cowan Park

east renfrewshire
**CULTURE
& LEISURE**

Venue Info

Age Group: 2017 / 2016 / 2015

Game format: 5v5 / 7v7

Surface: Grass Pitches

Postcode: G78 2SJ





Format Guide – 2016

Where and When	<p>Mearns Castle – (9-1pm) Cowan Park – Grass pitches (9-11am) A team's allocated time and location will vary– check the fixture schedule for details each week.</p>
Details	<ul style="list-style-type: none">➤ 2016 games will be held on either Astro (Mearns Castle) or Grass pitches (Cowan Park)➤ Pitches are marked out using cones on Astro, or lines on grass, and with 7-a-side size goals➤ Teams are assigned an hour slot which can change week on week as detailed in the fixtures➤ Games are 2x20 mins long.➤ Fun, encouragement and positivity is the order of the day!➤ At the end of a game, coaches may opt to do a penalty shoot out➤ All players must wear shin guards, wear a team strip or bib, and bring a drink➤ Coaches and supporters should follow the pitch set-up guide for where to stand at Cowan Park➤ At Mearns Castle, supporters should also remain outside the cage at all times➤ Toilet facilities are available at all venues➤ The toilet access at Mearns Castle is located within the Mearns Castle High School. Please note this is around a 4-5min walk each way, therefore, we would recommend that coach advise parents and players to use the toilet prior to attending their fixture slot. MDC can provide further information if required.➤ Mearns Castle parking is accessible at the school car park. Please note at Mearns Castle you must walk around the school to access the stairs taking you down to the pitch. Please park responsibly when attending both Mearns Castle and Cowan Park – it gets busy at matchday and it is crucial that access routes remain open. Do not park on Dubbs Road to avoid receiving a parking ticket.➤ Note that the Aurs Road will be closed this season at the Dams. Please plan additional time for the journey and expect additional busyness for Cowan and St Luke's



ERSDA Pitch Map 2025: Mearns Castle

east renfrewshire
**CULTURE
& LEISURE**

Venue Info

Age Group: 2016

Game format: 7v7

Surface: Astro Pitches

Postcode: G77 5GU





ERSDA Pitch Map 2025: Cowan Park

east renfrewshire
**CULTURE
& LEISURE**

Venue Info

Age Group: 2017 / 2016 / 2015

Game format: 5v5 / 7v7

Surface: Grass Pitches

Postcode: G78 2SJ





Format Guide – 2015

Where and When	<p>St Luke's – Astro pitches (12-1pm) Cowan Park – Grass pitches (11-1pm) A team's allocated time and location will vary– check the fixture schedule for details each week.</p>
Details	<ul style="list-style-type: none">➤ 2015 games will be held on either Astro (St Luke's) or Grass pitches (Cowan)➤ Pitches are marked out using cones on Astro, or painted lines on grass, and 7-a-side size goals➤ Teams are assigned an hour slot which can change week on week as detailed in the fixtures➤ Games are 2x25 mins long.➤ Fun, encouragement and positivity is the order of the day!➤ At the end of a game, coaches may opt to do a penalty shoot out➤ All players must wear shin guards, wear a team strip or bib, and bring a drink➤ Coaches and supporters should follow the pitch set-up guide for where to stand at Cowan Park➤ At St Luke's, supporters should also remain outside the cage at all times➤ Toilet facilities are available at both venues➤ Please park responsibly when attending Cowan Park – it gets busy at matchday and it is crucial that access routes remain open. Do not park on Dubbs Road to avoid receiving a parking ticket.➤ Note that the Aurs Road will be closed this season at the Dams. Please plan additional time for the journey and expect additional busyness for St Luke's



ERSDA Pitch Map 2025: St Lukes

east renfrewshire
**CULTURE
& LEISURE**

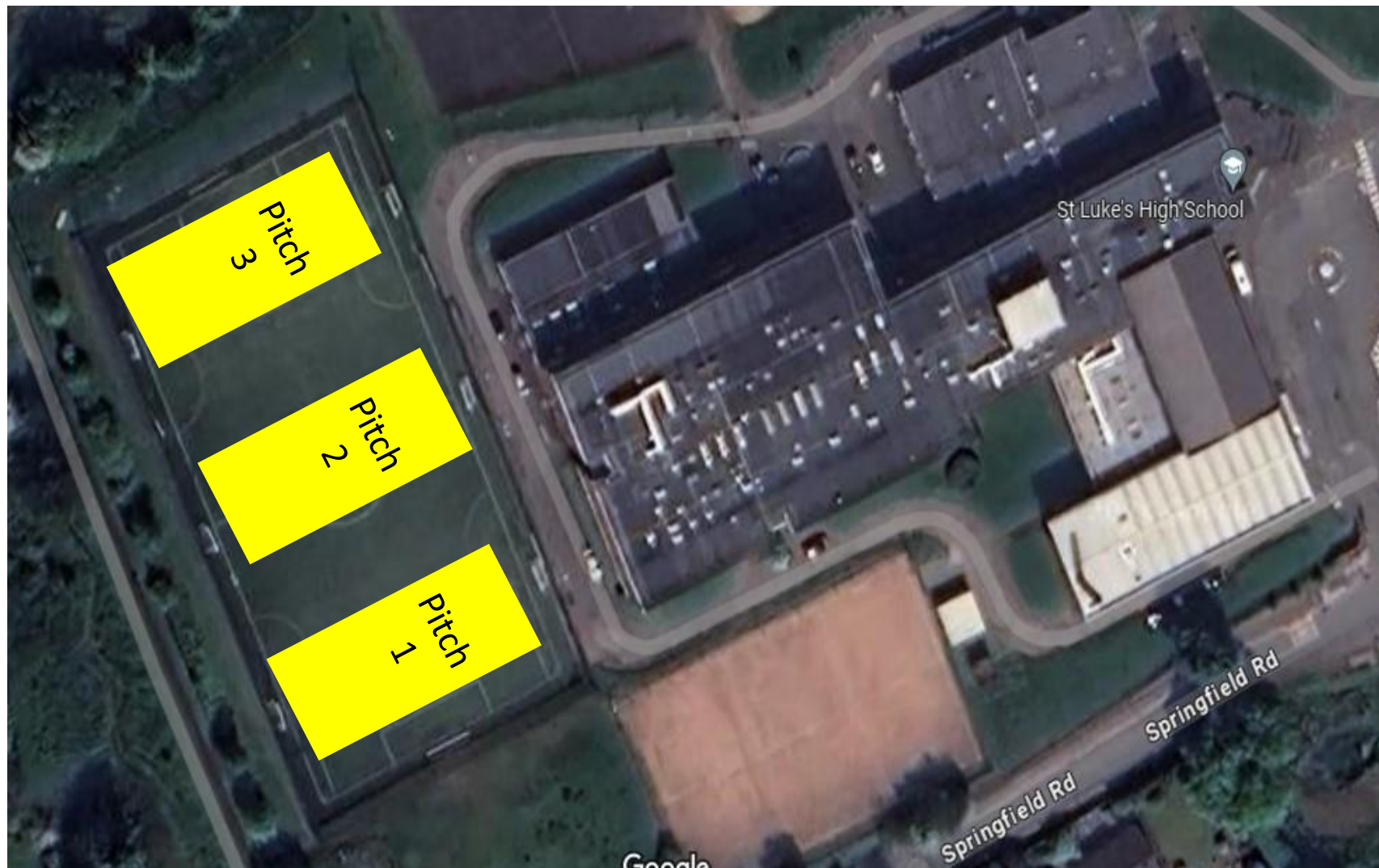
Venue Info

Age Group: 2015 / 2014

Game format: 7v7

Surface: Astro

Postcode: G78 2SG





ERSDA Pitch Map 2025: Cowan Park

east renfrewshire
**CULTURE
& LEISURE**

Venue Info

Age Group: 2017 / 2016 / 2015

Game format: 5v5 / 7v7

Surface: Grass Pitches

Postcode: G78 2SJ





Format Guide – 2014

Where	Muirend – Grass pitches (9-1pm) Overlee - Grass pitches (9-1pm)
When	Saturdays between 9am and 1pm for all games. A team's allocated time and location will vary– check the fixture schedule for details each week.
Details	<ul style="list-style-type: none">➤ 2014 games will be held on grass pitches at Muirend or Overlee➤ Pitches are marked out using cones and 7/9-a-side size goals➤ 7-a-side games will be played from March-June. 9-a-side games from August onwards➤ 7-a-side is not refereed. 9-a-side is refereed. The fee per game is £36 in total, split equally between teams. Teams should bring £18 each, and pay this to the referee in advance of kick-off➤ Teams are assigned an hour slot which can change week on week as detailed in the fixtures➤ Games are 2 equal halves, with a half time, within the allocated hour pitch slot. The referee will control game time.➤ The referee will support players and coaches in adapting to new game rules, and at their discretion may allow 'retakes' of game activities such as throw-ins or corners to enable learning.➤ Fun, encouragement and positivity is the order of the day!➤ All players must wear shin guards, wear a team strip or bib, and bring a drink➤ Coaches and supporters should follow the pitch set-up guide for where to stand at both venues➤ Toilet facilities are available in both pavilions



ERSDA Pitch Map 2025: Muirend Playing Fields

east renfrewshire
**CULTURE
& LEISURE**

Venue Info

Age Group: 2014 / 2013

Game format: 7v7 / 9v9

Surface: Grass

Postcode: G44 3HQ





ERSDA Pitch Map 2025: Overlee PF

east renfrewshire
**CULTURE
& LEISURE**

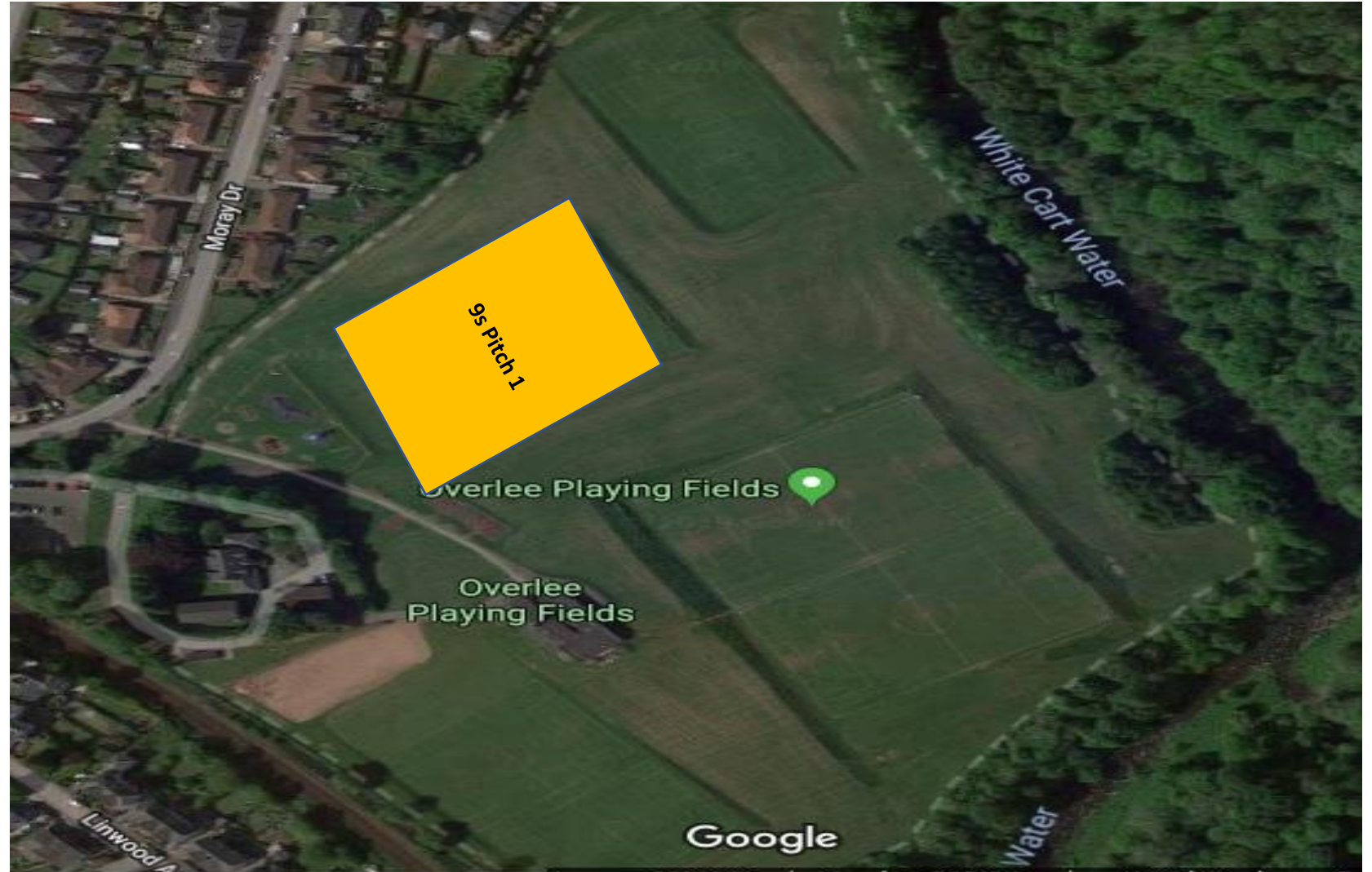
Venue Info

Age Group: 2013

Game format: 9v9

Surface: Grass

Postcode: G76 8NL





ERSDA Pitch Map 2025: Overlee PF

east renfrewshire
**CULTURE
& LEISURE**

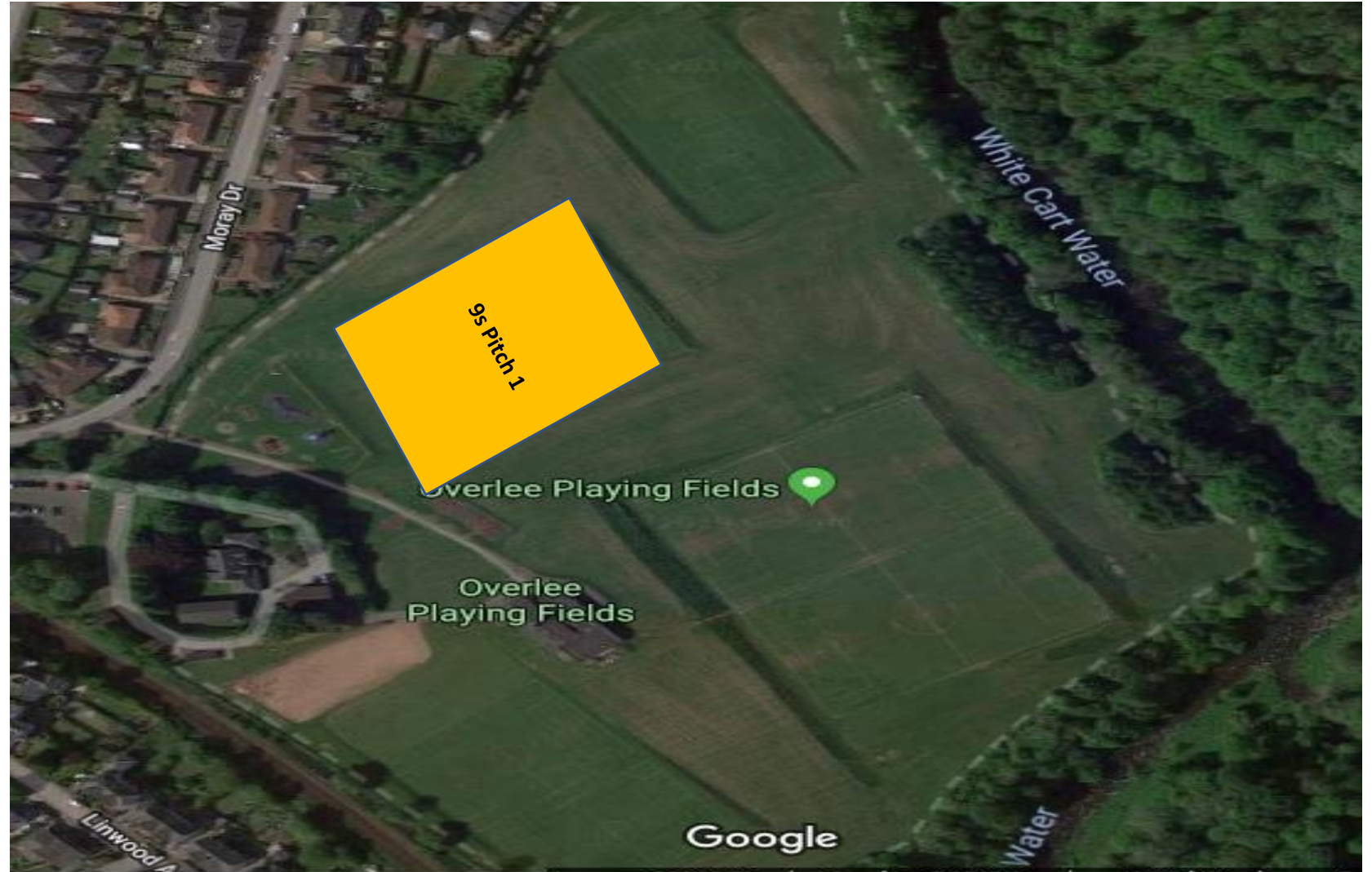
Venue Info

Age Group: 2013

Game format: 9v9

Surface: Grass

Postcode: G76 8NL





Format Guide – 2013

Where	Muirend – Grass pitches (9-1pm) Overlee - Grass pitches (9-1pm)
When	Saturdays between 9am and 1pm for all games. A team's allocated time and location will vary– check the fixture schedule for details each week.
Details	<ul style="list-style-type: none">➤ 2013 games will be held on grass pitches at Muirend or Overlee➤ Pitches are marked out using cones and 9-a-side size goals➤ Block 1 fixtures – 9-a-side all teams. Block 2 and 3 – mix of 9s and transition 11s.➤ From August onwards, 2013s will move to 11-a-side➤ 9-a-side is refereed. The fee per game is £36 in total, split equally between teams. Teams should bring £18 each, and pay this to the referee in advance of kick-off➤ Teams are assigned an hour slot which can change week on week as detailed in the fixtures➤ Games are 2 equal halves, with a half time, within the allocated hour pitch slot. The referee will control game time.➤ The referee will support players and coaches in adapting to new game rules, and at their discretion may allow 'retakes' of game activities such as throw-ins or corners to enable learning.➤ Fun, encouragement and positivity is the order of the day!➤ All players must wear shin guards, wear a team strip or bib, and bring a drink➤ Coaches and supporters should follow the pitch set-up guide for where to stand at both venues➤ Toilet facilities are available in both pavilions



SWF Format Guide – U6/U7s

east renfrewshire
**CULTURE
& LEISURE**

Where	Eastwood High School – Astro pitches only – postcode G77 6NQ (pitch layout will be advised/ managed on the day)
When	Sunday Mornings – 9am – 10am Fixtures shared the week in advance on coaches' whatsapp Key contact- Roslynn Davidson
Details	<ul style="list-style-type: none">➤ All U7s games are held on the astro football pitch at Eastwood High School - G77 6NQ➤ Pitches are marked out using cones and fun 4 size goals➤ In advance of the 9am kick off, the MDC will line pitches with cones. On arrival for the 9am kick off 1 coach from each team should collect a metal soccer 4's goal from the storage area at Eastwood HSSC adjacent to the football pitch and take this to their first pitch and set up. On conclusion of the final fixture at 10am 1 coach from each team should return the metal soccer 4's goal to the storage area. Coaches are requested to leave soccer 4's goals folded outside the storage area. The MDC can provide direction if required.➤ Games are 10 mins long, with 4 mins in between to go to the next game➤ An ERSDA matchday coordinator will use a hooter to let you know when to start and stop games➤ At the end of a game, high five the opposition and then go straight to next pitch before team talks➤ When the ball goes over the touchline it is an opposition dribble or kick-in – see National Player Journey guidelines➤ There is no referee – coaches collaborate to ensure the game rules are followed➤ All players must wear shin guards, wear a team strip or bib, and bring a drink➤ Coaches should not stand directly behind the goals➤ All supporters to remain outside the pitch cage at all times➤ The school has changing rooms and toilet facilities➤ Fun, encouragement and positivity is the order of the day!



ERSDA Pitch Map 2025: Eastwood HSSC

east renfrewshire
**CULTURE
& LEISURE**

Venue Info

Age Group: U6/U7

Game format: 4v4

Surface: Astro

Postcode: G77 6NQ





SWF Format Guide – U8s

east renfrewshire
**CULTURE
& LEISURE**

Where	Eastwood High School – Astro pitches only– postcode G77 6NQ (pitch layout will be advised/ managed on the day)
When	Sunday Mornings – 10am-12pm Fixtures and timings shared the week in advance on coaches' whatsapp Key contact- Roslynn Davidson
Details	<ul style="list-style-type: none">➤ All U8s games are held on the astro football pitch at Eastwood High School - G77 6NQ➤ Pitches are marked out using cones and 5-a-side size bownet goals➤ In advance of the 10am kick off , 1 coach from each team should collect a pre-built bownet from the MDC for their pitch. On conclusion of the final fixture at 12pm, 1 coach from each team should return the bownet to the MDC for the MDC to dismantle and put away. Coaches are requested not to fold away bownets.➤ Teams are assigned an hour slot which can change week on week➤ Games are 15 mins long, with 5 mins in between to go to the next game pitch➤ Fun, encouragement and positivity is the order of the day!➤ An ERSDA matchday coordinator will use a hooter to let you know when to start and stop games➤ At the end of a game, high five the opposition and then go straight to next pitch before team talks➤ All players must wear shin guards, wear a team strip or bib, and bring a drink➤ Coaches should not stand directly behind the goals➤ All supporters to remain outside the pitch cage at all times➤ The school has changing rooms and toilet facilities➤ Fun, encouragement and positivity is the order of the day!



ERSDA Pitch Map 2025: Eastwood HSSC

east renfrewshire
**CULTURE
& LEISURE**

Venue Info

Age Group: U8

Game format: 5v5

Surface: Astro

Postcode: G77 6NQ





SWF Format Guide – U10s

Where	Barrhead High School – Cowan Park Astro – postcode G78 2SJ (pitch layout will be advised/ managed on the day)
When	Sunday Mornings - Fixtures and timings shared the week in advance on coaches' whatsapp Key contact- Roslynn Davidson
Details	<ul style="list-style-type: none">➤ All U10s games are held on the astro football pitch at Cowan Park Astro – G78 2SJ➤ Pitches are marked out using cones and 7-a-side size goals➤ Teams are assigned an hour slot which can change week on week as detailed in the fixtures➤ Games are 2 x 20-25 mins long.➤ At the end of a game, coaches may opt to do a penalty shoot out➤ All players must wear shin guards, wear a team strip or bib, and bring a drink➤ Coaches should not stand directly behind the goals➤ All supporters to remain outside the pitch cage at all times➤ The venue has changing rooms and toilet facilities➤ Fun, encouragement and positivity is the order of the day!



ERSDA Pitch Map 2025: Cowan Astro

east renfrewshire
**CULTURE
& LEISURE**

Venue Info

Age Group: U10s

Game format: 7v7

Surface: Astro

Postcode: G78 2SJ

