



East Renfrewshire Soccer Development Association

Small-Sided Games
Season Guide 2024



ERSDA small-sided game

Dear all,

At ERSDA our ambition is simple – we want to create the best possible development environment for our young people to play football. We are guided by the National Player Pathway and the rules and regulations of the SYFA and SWF. Further, we do our best to embrace the “Let them play” philosophy.

This season guide is intended to clarify what these ambitions mean in practice in season 2024:

- How we plan to approach fixturing, scheduling and team availability
- How we will manage the matchday environment
- The game format details we’ll adopt
- The way in which we’ll organise age groups around the venues.

‘We’ is the operative word in all these statements. Run entirely by volunteers, the ERSDA league will achieve the best outcomes when the association, clubs, teams, supporters and players work together. Please join us in making that happen, whatever your connection to the game.

Here’s to a great season 2024!

Your ERSDA committee





Contacts

Role / Source	If you are looking for...	Contact details
ERSDA website	ERSDA documentation, team templates and fixture information	https://ersda.uk
ERCL website	Pitch booking and availability and venue information	https://www.ercultureandleisure.org/sports-arts/sports-pitches/
ERSDA President	ERSDA structure and constitution queries	Dave Mackay – president@ersda.uk
ERSDA Secretary	Team registrations and permits	Roslynn Davidson – secretary@ersda.uk
ERSDA Vice President	Referee and match official queries	Andy Robertson – vicepresident@ersda.uk
ERSDA Treasurer	Invoicing and team fees	Alan Hay – treasurer@ersda.uk
ERSDA Child Protection Officer	Player wellbeing and PVG-related enquiries	Nikki Winning – childprotectionofficer@ersda.uk
ERSDA Saturday Match Secretary	Boys/mixed match day incident reporting and small-sided game enquiries	Rachel Renfrew – saturdaymatchsecretary@ersda.uk
ERSDA Sunday Match Secretary	SWF fixturing, match day incident reporting and new team enquiries	Roslynn Davidson – sundaymatchsecretary@ersda.uk
Age Group Coordinators	2018 fixtures and scheduling enquiries	Creag Gibb - coaches only – via age group WhatsApp
	2017 fixtures and scheduling enquiries	Chris Rose- coaches only – via age group WhatsApp
	2016 fixtures and scheduling enquiries	Vikram Vasudeva- coaches only – via age group WhatsApp
	2015 fixtures and scheduling enquiries	John Nugent- coaches only – via age group WhatsApp
	2014 fixtures and scheduling enquiries	Ross Morrin- coaches only – via age group WhatsApp
	2013 fixtures and scheduling enquiries	Brian Forbes - coaches only – via age group WhatsApp
	2012 fixtures and scheduling enquiries	George Thompson- coaches only – via age group WhatsApp
ERCL Support	Coach advice and education; venue coordinator enquiries	John Gervaise - John.Gervaise@ercultureandleisure.org Peter Dunn - Peter.Dunn@eastrenfrewshire.gov.uk



Fixtures and Scheduling

The Season Planning Approach

Managing Changes to Game Availability

Confirming Games as “on” or “off”



Season Planning Approach

Fixtures in advance – 4-5 weeks at a time

For season 2024, the year is broken down into 6 fixture blocks of 4-5 weeks (see right) for planning purposes. Each block has 4-5 weeks of fixtures which will be issued in advance to allow everyone to know when their games are happening, and to plan their schedule accordingly.

We're doing this in response to feedback requesting greater visibility of fixtures. It is a complex task to prepare e.g. for block 1 across formats we'll have 282 teams playing a total of 1232 fixtures in a 4-week period! We are making as much use of space as we can, running at 98.8% utilisation of pitches overall.

A consequence of giving advance notice with very limited additional pitch capacity is that week on week, age group coordinators will not be able to plan fixtures according to team availability.

In previous years, where it was possible to set schedules to accommodate team requests, this will not be possible in season 2024. With sufficient notice, age group coordinators may be able to facilitate fixture swaps, if agreeable to all teams impacted. But it is imperative that >4 days notice is given to any such request, and is also on the understanding that changes might not be possible.

This seems the fairest arrangement all round, and all clubs will have the same information at the same time as to how their fixture block is arranged.

Fixtures will be distributed by WhatsApp to age groups, email to team and club secretaries, and posted on the ERSDA website.

Block 1

2/3/24 – 24/3/24

Block 2

20/4/24 – 18/5/24

Block 3

01/06/24 – 23/6/24

Block 4

17/8/24 – 08/9/24

Block 5

14/9/24 – 27/10/24

Block 6

02/11/24 – 30/11/24

Non-Playing Weekends

March– 30th/31st

April– 6th/7th; 13th/14th

May– 25th/26th

June– 29th/30th

No games in July

August– 3rd/4th; 10th/11th

September– 28th/29th

October– 12th/13th; 19th/20th



Managing Changes to Game Availability

Making sure that everyone knows what is happening

Before Matchday

If there is a reason that your team is unable to complete its allocated fixtures on matchday, please communicate this information as early as possible to your fixture coordinator. They will be able to explore with you the possibility of swapping fixtures, or will be able to re-arrange fixtures for your opponents if your team will be absent.

On Matchday

Should something happen on matchday that means you are delayed or unable to make your game, team secretaries should post a status update to the age group Whatsapp group. This will allow your opposition and the coordinators to be aware and manage the players in attendance.

If a team does not turn up to their fixture without advance notice, then a follow-up will be conducted by ERSDA with the relevant club secretary.





Confirming Games as “on” or “off”

Pitches being playable or not can be a tricky matter to call. We will always do our best to get games played. But we also need to follow the protocols from our pitch provider (ERCL), and will always put the safety of players and all involved first when making decisions.

We will adopting the following approach to confirming suitable playing conditions.

Part 1 – ERCL inspection

Before 5pm on a Friday night, ERCL will inspect pitches, and confirm the status of pitches via the [ERCL website](#) and [X account](#)

If the pitches are declared OFF on Friday, then they will definitely be off on the Saturday/Sunday.

If the pitches are declared ON by ERCL on a Friday, there will be no further update until Saturday morning.

Part 2 – Making the call at game time

Whilst we hope all fixtures will remain on after a Friday inspection, we will apply 3 playability tests to each game:

- Is the pitch safely playable?
- Will the pitch be unduly damaged by further play?
- Are the weather conditions tolerable for safe grassroots play?

We will strive to apply these tests consistently across venues. If conditions change during the morning of fixtures, and games become unplayable, the earliest possible notice of cancellation will be given to all teams yet to play via a WhatsApp age group message.

On game day, consider fixtures ON unless informed otherwise



Matchday environment

- Creating a safe and positive matchday
- Matchday behaviour charter
- 5, 7 and 9-a-side pitch set up
- Support from venue coordinators
- Managing matchday logistics



Ensuring a Safe and Positive Matchday

Charter, Pitch Guidance, Disciplinary Follow-Up and Venue Coordinators

This season, we will be adopting the following approach to ensure that the matchday environment is safe and positive for all:

- 1) We ask all those attending games– as coaches or supporters – to read and follow our match day charter (see next page).
- 2) For our 4-a-side games, we ask all supporters to remain outside the cages at Pro-soccer or Woodfarm. For the 5, 7 and 9-a-sides, we ask that teams follow the pitch set-up arrangements (outlined later in the document). This is taken from an SFA good practice guide.
- 3) We will have venue coordinators at each location to observe that the charter and pitch arrangements are adopted consistently. Venue coordinators will also prepare a matchday conduct report, noting any issues arising and also moments of sporting conduct.

Any matchday attendee will also be able to provide feedback or comments to matchday@ersda.uk

For the avoidance of doubt, clubs are expected to ensure the conduct and behaviour of their supporters and coaches (as opposite). Whilst the vast majority of ERSDA games passed with out incident last season, there were exceptions where coach or supporter conduct was unacceptable.

75 Clubs, leagues and associations must ensure the safety, good conduct and behaviour of its supporters before, during or at the conclusion of any match. In any match the home team, league or association must ensure the safety, good conduct and behaviour of all supporters before, during or at the conclusion of any match. The foregoing applies to all matches authorised by or matches played under the jurisdiction of SYFA.

In the event of misbehaviour of supporters being reported to or otherwise being brought to the attention of SYFA, a league or association, SYFA, a league or association will have jurisdiction to deal with the matter and to impose sanctions in respect thereof as prescribed within SYFA Disciplinary Procedures.

Each club, team, league or association must ensure that its players, officials, supporters and any person exercising a function for or in connection with the club, team, league or association do not engage in unacceptable conduct.

From the SYFA supplementary and playing rules (2024)

https://www.scottishyouthfa.co.uk/images/Information-Downloads/Policies-and-Procedures/Supplementary_Playing_Rules_2023-2024.pdf

Where incidents are reported, ERSDA will follow up with club and team secretaries of those involved. The ERSDA disciplinary committee will record events and responses, and may impose sanctions depending on the nature of the incident. Repeat incidents may be escalated to the SYFA for further consideration. The regulations set out in the SYFA disciplinary procedures will guide all these activities.

We hope never to have to use these disciplinary approaches but they will be deployed consistently should any incidents occur. It feels important to share this perspective with all clubs in advance of the season starting.



ERSDA 2023/4 – Matchday Behaviour Charter

The standards to which we'll hold ourselves during games

We pride ourselves on working together to create a positive environment for our young people to enjoy their football. So there is no doubt as to what that means, we've drawn on the SFA's "Let Them Play" guidelines to make a match day charter for coaches and supporters. Thank you in advance for helping us put it into practice.

Coaches

- Have the well-being, safety and enjoyment of players as a top priority
- Never tolerate any form of bullying or abuse
- Help players improve with feedback and coaching, not making all their decisions for them
- Encourage fair play & high standards of behaviour
- Always show respect to everyone involved in the game
- Respect the decisions of other coaches
- Don't gloat or antagonise the opposition
- Don't address opposition players or supporters not adhering to the code of conduct – leave that to the opposition coaches
- Remind fellow coaches and supporters from your team only of their obligations if matters get heated
- Absolutely no use of swearing or abusive/ threatening language

Supporters

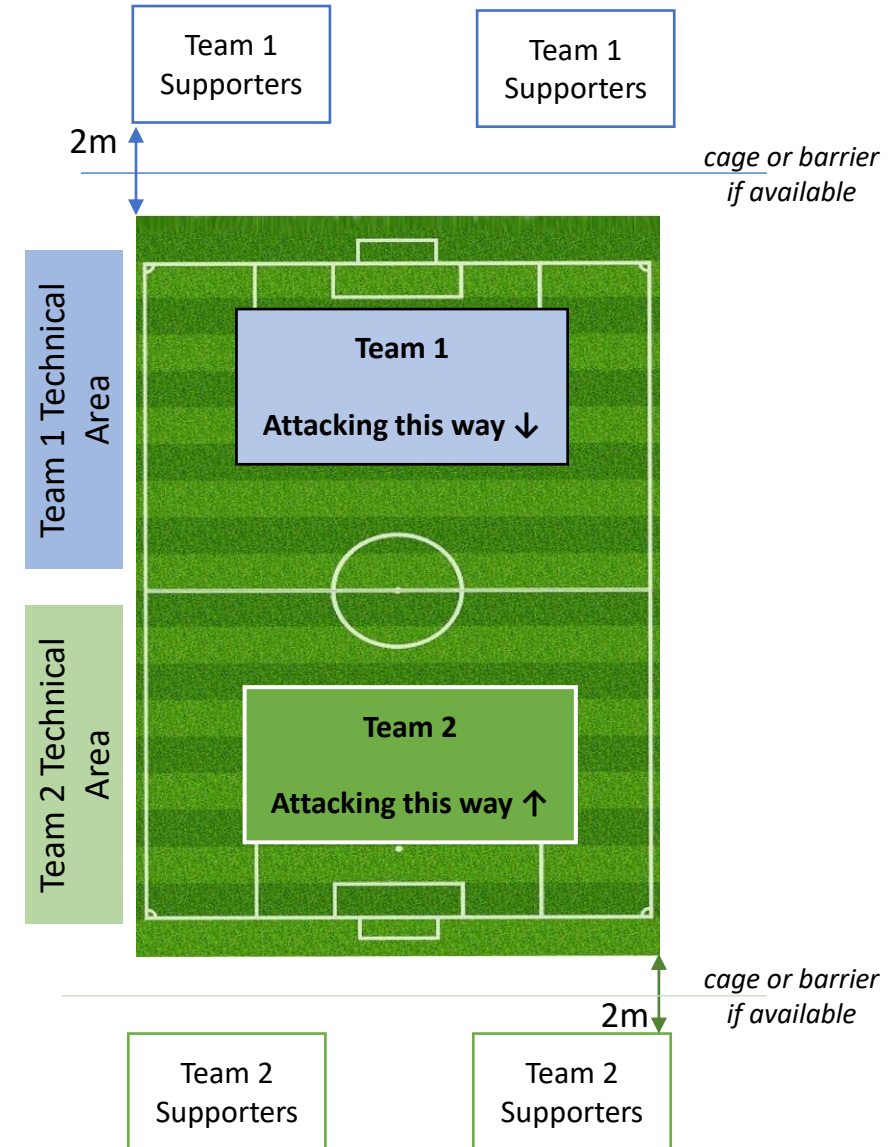
- When spectating, stay in the designated supporter area for your pitch facility
- Applaud good play and celebrate if a goal is scored
- Let the players play – its their game
- Be a role model for your player in how you talk and act around the game
- Respect the coaches' decisions & don't shout at them – without them volunteering there would be no game
- Don't approach any member of the opposition coaches, players or supporters at any point with aggression or negativity
- Don't shout instructions – the team already has a set of coaches
- Try to have fun and enjoy watching your player play
- Absolutely no use of swearing or abusive/ threatening language



ERSDA 5, 7 & 9 a side Pitch Set-up

Minimising the potential for touchline issues with an agreed set-up

1. Before kick-off, each team takes an end of the pitch for all their coaches, subs and supporters.
2. It is up to coaches to instruct their supporters where they should stand. If there is a cage or barrier, supporters should remain behind it, outside the playing area.
3. Where there is no barrier or cage, supporters must be 2m back from the edge of the pitch and not directly behind the goal.
4. The only exception is where accessibility needs or pitch facilities do not allow this ... in this case supporters should be as close to 2m back from the pitch as possible
5. Both sides have a technical area which, for simplicity, is one half of the pitch, from the halfway line to the goal line.
6. Each team should have a different half of the pitch for their technical area for the whole game.
7. Coaches and substitutes must stay in their technical area, and supporters are not permitted to enter the technical area.
8. First aiders may enter the field of play during a game to administer first aid if required.
9. At no point during the game should any coach or supporter enter the field of play, or the opposition technical or supporter area.





Support from Venue Coordinators

Matchday officials to help things run smoothly

Venue coordinators are matchday officials provided by our partners, East Renfrewshire Culture and Leisure (ERCL). They will be identifiable at venues, and will provide support to the smooth running of match day.

The aim of the venue coordinator role is to:

- (a) Support the delivery of ERSDA small sided football opportunities for all.
- (b) Ensure a fun, safe and educational environment for all participants.

Coaches, supporters and players will be able to ask the venue coordinators about any aspect of the game formats or venue set-ups.

They will observe proceedings, and give feedback and advice in support of the smooth running of the game.

For 4 and 5-a-side games, venue coordinators will manage the time (using a hooter or whistle to indicate the start and end of game time).

They will be asked for matchday reports, in a similar style to referees, and will be obliged to report any incidents or issues.

They may also highlight observed incidents of good sporting conduct!

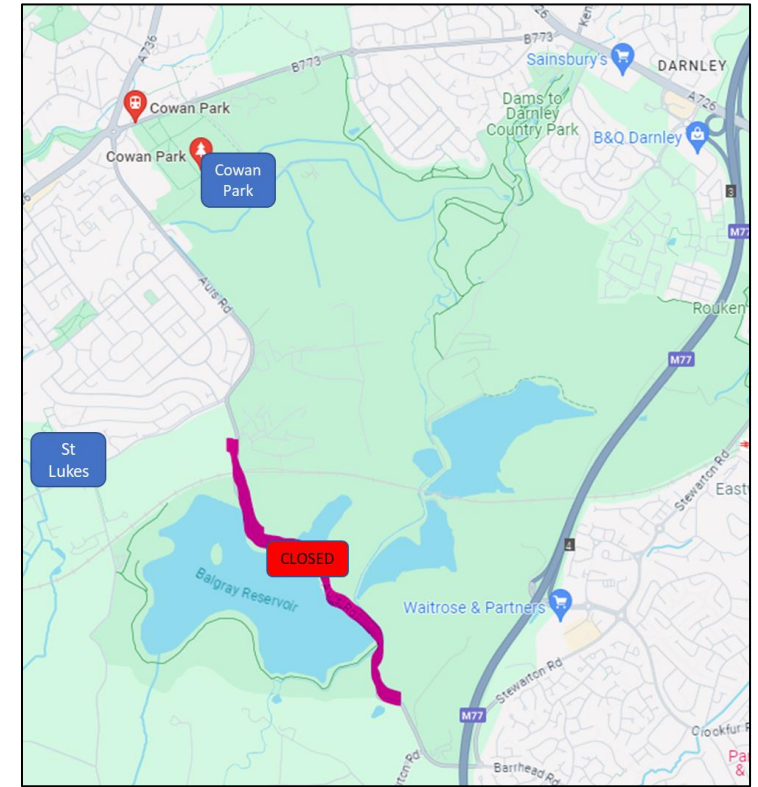
We ask that players, coaches and supporters consider venue coordinators as match officials, as described in the SYFA, and show them - and their instructions - respect on matchday.





Managing Matchday Logistics

- **Saturday or Sunday?** Boys/Mixed game fixtures will be on Saturday only, and Girls game fixtures will be on Sunday only. The playing weekends / holiday weekends are the same.
- **Road Closure – Plan Additional Journey Time.** For the duration of 2024, the Aurs Road at Darnley Dams will be closed. Please allow additional time for travelling to and from Cowan Park and St Luke's venues (see opposite).
- **Grass Pitches - Setting Up / Taking Down Goals** On grass, first teams on a pitch are requested to retrieve goal equipment from the goal store and set them up prior to the match (ideally one set of goals per team). Equally, last teams off a pitch are requested to take goals down and return the equipment to the goal store. Allow 15 mins etc. in arrival / departure time to do so. An ideal opportunity to ask parents to help (pro tip – request specific parents, not general calls out to parents, to avoid disappointment!)
- **Bring your own footballs** As age groups start the new season, please note the size of match ball to be used (listed on the national player pathway page). Balls are not provided at the games – each team should bring footballs for warm up and possible use in their matches.
- **Referee Match Fee – 9-a-side** For 9-a-side, there is a referee fee to be covered per match. It is £36 per game, split between the teams. This should be paid direct to the ref before kick-off.
- **Touchline team.** Each team should meet the requirements laid out in the SYFA playing rules (section 22.2) about touchline representation of officials (coaches & first aiders). If you are sharing first-aid representation at a venue, ensure first-aiders know and agree to the arrangements in advance of match activities.



- **Ensure WhatsApp group representation**
Each match day, make sure your team is represented in the age group WhatsApp to enable management of issues. These groups will also have the fixture coordinator, venue coordinator and matchday secretary present. If your usual team contact is away, make sure a designated alternative contact is on the WhatsApp group in advance of match day.



Game Format

The National Player Pathway



National Player Pathway (1/2)

Game standards and formats



	YEAR OF BIRTH	2018	2017	2016	2015	2014	2013	2012
	SWF	U7	U7	U8	U10	U10	U12	U12
	MAX PERMITTED FORMAT	4v4 Multi Game	4v4	5v5	7v7	7v7	7v7	9v9
	ADVISED MAXIMUM GAME-DAY SQUAD	6	6	7	10	10	10	14
	PLAYING SEASON	March to November	March to November	March to November	March to November	March to November	March to June Transition to 9s August 2024	August 2024 to June 2025
	BALL SIZE	3	3	3	4 Boys 3 Girls	4 Boys 3 Girls	4	4
	OFFSIDE	✗	✗	✗	✗	✗	✗	✓
	THROW INS	✗	✗	✗	✗	✗	✓	✓
	KICK INS	✓	✓	✓	✓	✓	✗	✗
	DRIBBLE IN	✓	✓	✓	✗	✗	✗	✗
	PASS BACK RULE APPLIED	✗	✗	✗	✗	✗	✗	✓

The national player pathway is how our governing body – the SFA – asks us to run the game. This table is a summary of the rules and guidelines for each age group.

Note, the Girls game organises by different age groups to the Boys/Mixed game

For more information on the pathway, please follow the link below:

<https://www.scottishfa.co.uk/football-development/participation/childrens-youth-football/children-youth-player-pathway/>



National Player Pathway (2/2)



	YEAR OF BIRTH	2018	2017	2016	2015	2014	2013	2012
	SWF	U7	U7	U8	U10	U10	U12	U12
	FREE KICKS	Indirect	Indirect	Indirect	Indirect	Indirect	Indirect	Normal Rules Apply
	CORNERS	Short	Short	Short	Short	Short	Short	Short
	RETREATING LINE	✗ But Halfway after a goal	✗ But Halfway after a goal	✗ But Halfway after a goal	✓	✓	✓	✗
	SUBSTITUTES	Rolling	Rolling	Rolling	Rolling	Rolling	Rolling	Rolling
	MAX LENGTH OF GAME	10 mins (Max 4 games)	10 mins (Max 4 games)	2x 10mins x 2 or 3 x 15mins	2x 20mins or 3 x 15mins	2x 25mins or 3 x 15mins	2x 25mins or 3 x 15mins	2x 30mins
	REFEREE	✗	✗	✗	✗	✗	✗	Optional
	TROPHY / RESULTS	✗	✗	✗	✗	✗	✗	✗
	MAX PITCH DIMENSIONS	20 x 30m	20 x 30m	30 x 40m	36 - 45m x 55 - 65m 11m retreating line	36 - 45m x 55 - 65m	36 - 45m x 55 - 65m	42 - 47m x 65 - 75m
	MAX GOAL SIZE	2.5 x 1.2m (8ft x 4ft)	2.5 x 1.2m (8ft x 4ft)	4.9 x 1.8m (16ft x 6ft)	4.9 x 1.8m (16ft x 6ft)	4.9 x 1.8m (16ft x 6ft)	4.9 x 1.8m (16ft x 6ft)	4.9 x 1.8m (16ft x 6ft)



Small-Sided Game App

The screenshot shows the Scottish FA website's page for the Grassroots Game App. At the top, there is a navigation bar with links for Tickets, Shop, Newsletter, Careers, Supporters Club, and Login. Below this is a secondary navigation bar with links for SCOTLAND, SCOTTISH CUP, PERFORMANCE, FOOTBALL DEVELOPMENT, SCOTTISH FA, 150 YEARS, and HAMPDEN PARK. The main content area features a large banner with the text "SCOTTISH FA GRASSROOTS GAME APP" and images of the app on various mobile devices. Below the banner is a breadcrumb trail: Home > Football Development > Participation > Grassroots Game App. A horizontal menu contains links for Heading Guidelines, Children & Youth, Adult (18 years+), Girls' and Women's Football, and Para-Football. The main heading is "Download the Scottish FA Grassroots Game App". Below this are two links: "Scottish FA Grassroots Game on iOS" and "Scottish FA Grassroots Game on Google Play". A paragraph explains that the app is designed to help support all clubs, coaches, players, and parents in understanding the rules and ethos of the National Grassroots Player Pathway. Another paragraph states that the 'National Grassroots' Player Pathway is a core component of the Scottish FA's football development ethos, designed to provide fun, age, and stage-appropriate games for children in a relaxed environment. To the right of the text is a large yellow button with the Scottish FA crest and the text "GET IT ON Google Play". Below this button is a smaller button that says "Download on Google Play". At the bottom of the page, there are two small images of the app on mobile phones.

For an accessible version of all the rules and guidance for the small-sided game, you can download the SFA's app at:

<https://www.scottishfa.co.uk/football-development/participation/grassroots-game-app/>



Venue and Age Group Info

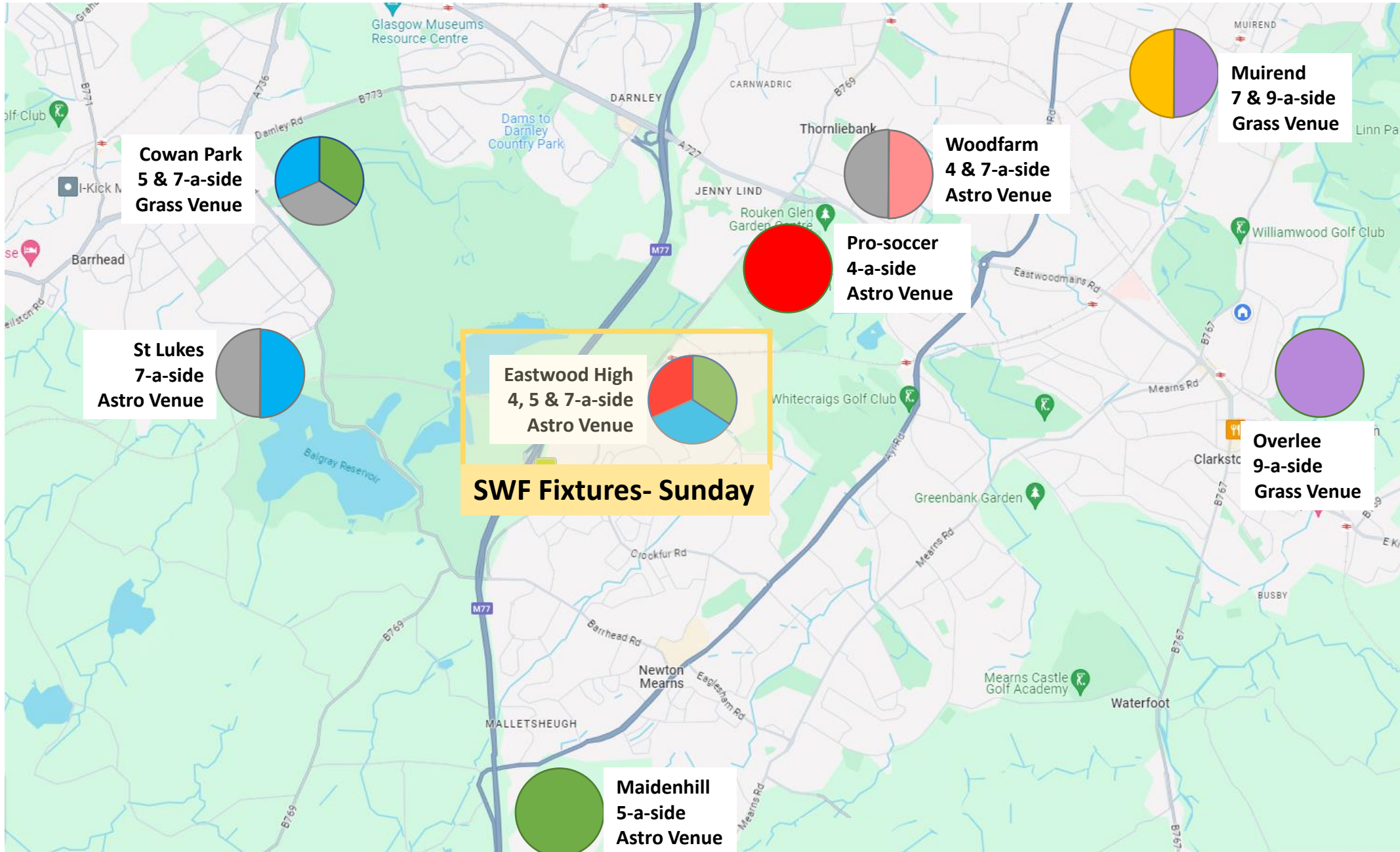
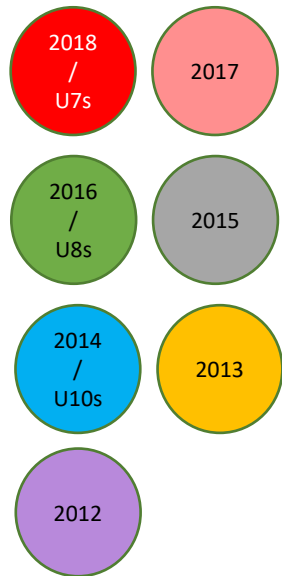
Venue Map

Matchday Dates

Age group (2012-2018) format summaries



Small-sided game venues





Match Day Dates: March to June 2024

Saturday's (SYFA)	Sunday's (SWF)	Holiday Dates
2, 9, 16, 23 March	3, 10, 17, 24 March	30, 31 March 2024
20, 27 April	21, 28 April	6, 7, 13, 14 April 2024
4, 11, 18 May	5, 12, 19 May	25, 26 May
1, 8, 15, 22 June	2, 9, 16, 23 June	



Format Guide – 2018

Where	Pro-Soccer – Astro pitches only
When	Saturdays between 9am and 1pm for all games. A team's allocated 1 hr slot will vary– check the fixture schedule for details each week.
Details	<ul style="list-style-type: none">➤ All 2018 games are held on astro pitches at Pro Soccer at Rouken Glen - G46 7UG➤ Pitches are marked out using cones and fun 4 size goals➤ ERSDA matches will take place on pitches 4,5,6 and 8, between 9am and 1pm➤ Teams are assigned an hour slot which can change week on week as detailed in the fixtures➤ Games are 10 mins long, with 3 mins in between to go to the next game➤ An ERSDA venue coordinator will use a hooter to let you know when to start and stop games➤ At the end of a game, high five the opposition and then go straight to next pitch before team talks➤ The boards are not in play. When the ball goes over the touchline it is an opposition dribble or kick-in➤ All players must wear shin guards, wear a team strip or bib, and bring a drink➤ Coaches should not stand directly behind the goals➤ All supporters to remain outside the cage at all times➤ The Pro-Soccer clubhouse has changing rooms, toilets and catering facilities➤ Fun, encouragement and positivity is the order of the day!



ERSDA Pitch Map 2024: Pro-Soccer

Venue Info

Age Group: 2018's

Game format: 4v4

Surface: Astro

Postcode: G46 7UG





Format Guide – 2017

Where	Woodfarm – Astro pitches only
When	Saturdays between 9am and 1pm for all games. A team's allocated 1 hr slot will vary– check the fixture schedule for details each week.
Details	<ul style="list-style-type: none">➤ All 2017 games are held on astro pitches at Woodfarm High School - G46 7HG➤ Pitches are marked out using cones and fun 4 size goals➤ Matches will take place on pitches 1-8 (see next page), between 9am and 12pm➤ Teams are assigned an hour slot which can change week on week as detailed in the fixtures➤ Games are 10 mins long, with 4 mins in between to go to the next game➤ An ERSDA venue coordinator will use a hooter to let you know when to start and stop games➤ At the end of a game, high five the opposition and then go straight to next pitch before team talks➤ When the ball goes over the touchline it is an opposition dribble or kick in➤ All players must wear shin guards, wear a team strip or bib, and bring a drink➤ Coaches should not stand directly behind the goals➤ All supporters to remain behind the barrier or fence at all times➤ The clubhouse has changing rooms and toilets➤ Arriving teams have access to two of the 5-a-side cages for warm-up. Please use considerately.➤ Matchday parking gets really busy – please take care and ensure access is not obstructed. Additional parking is available in the Woodfarm High school car park across the road from the pitches.➤ Fun, encouragement and positivity is the order of the day!



ERSDA Pitch Map 2024: Woodfarm Astro

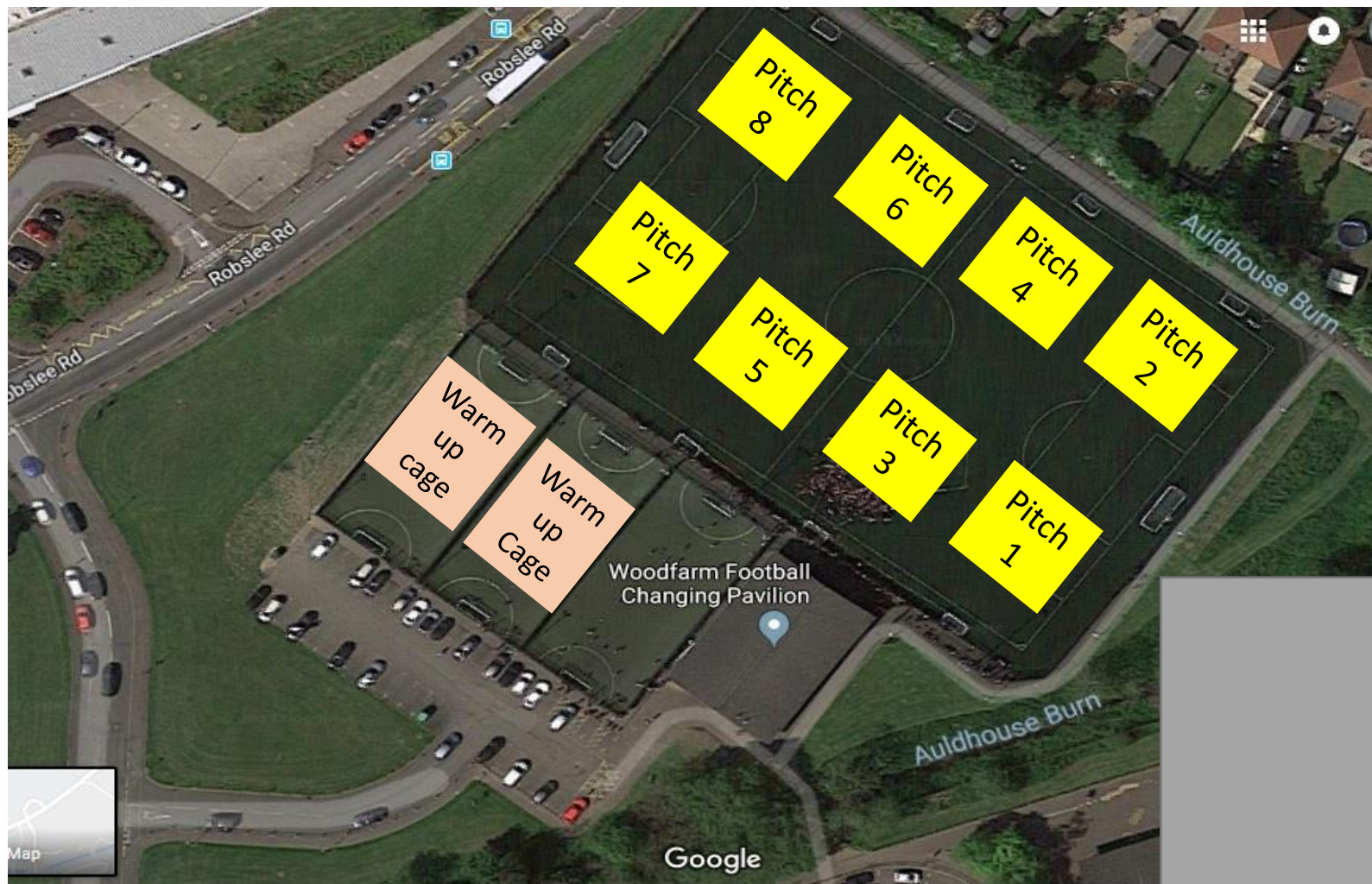
Venue Info

Age Group: 2017

Game format: 4v4

Surface: Astro

Postcode: G46 7HG





Format Guide – 2016

Where	Maidenhill – Astro pitches Cowan Park – Grass pitches
When	Saturdays between 9am and 1pm for all games. A team's allocated 1 hr slot and location will vary– check the fixture schedule for details each week.
Details	<ul style="list-style-type: none">➤ 2016 games will be held on either Astro pitches (Maidenhill) or Grass pitches (Cowan Park)➤ Pitches are marked out using cones and 5-a-side size goals➤ Teams are assigned an hour slot which can change week on week as detailed in the fixtures➤ Games are 15 mins long, with 5 mins in between to go to the next game pitch➤ Fun, encouragement and positivity is the order of the day!➤ An ERSDA venue coordinator will use a hooter to let you know when to start and stop games➤ At the end of a game, high five the opposition and then go straight to next pitch before team talks➤ All players must wear shin guards, wear a team strip or bib, and bring a drink➤ Coaches and supporters should follow the pitch set-up guide for where to stand at Cowan Park➤ At Maidenhill, supporters should also remain outside the cage at all times➤ The school has toilet facilities for players and coaches which are accessed by key fob – speak to the venue coordinator for the fob.➤ Please park responsibly when attending Cowan Park – it gets busy at matchday and it is crucial that access routes remain open. Do not park on Dubbs Road to avoid receiving a parking ticket.➤ Note that the Aurs Road will be closed this season at the Dams. Please plan additional time for the journey and expect additional busyness



ERSDA Pitch Map 2024: Maidenhill P.S

Venue Info

Age Group: 2016

Game format: 5v5

Surface: Astro

Postcode: G77 6RT





ERSDA Pitch Map 2024: Cowan Park

Venue Info

Age Group: 2016 / 2015 / 2014

Game format: 5v5 / 7v7

Surface: Grass Pitches

Postcode: G78 2SJ





Format Guide – 2015

Where	St Luke's – Astro pitches (9-11am) Cowan Park – Grass pitches (9-1pm) Woodfarm – Astro pitches (12-1pm only)
When	Saturdays between 9am and 1pm for all games. A team's allocated time and location will vary– check the fixture schedule for details each week.
Details	<ul style="list-style-type: none">➤ 2015 games will be held on either Astro (St Luke's or Woodfarm) or Grass pitches (Cowan Park)➤ Pitches are marked out using cones and 7-a-side size goals➤ Teams are assigned an hour slot which can change week on week as detailed in the fixtures➤ Games are 2x20 mins long.➤ Fun, encouragement and positivity is the order of the day!➤ At the end of a game, coaches may opt to do a penalty shoot out➤ All players must wear shin guards, wear a team strip or bib, and bring a drink➤ Coaches and supporters should follow the pitch set-up guide for where to stand at Cowan Park➤ At St Luke's or Woodfarm, supporters should also remain outside the cage at all times➤ Toilet facilities are available at all venues➤ Please park responsibly when attending Cowan Park – it gets busy at matchday and it is crucial that access routes remain open. Do not park on Dubbs Road to avoid receiving a parking ticket.➤ Note that the Aurs Road will be closed this season at the Dams. Please plan additional time for the journey and expect additional busyness for Cowan and St Luke's



ERSDA Pitch Map 2024: St Luke's HS

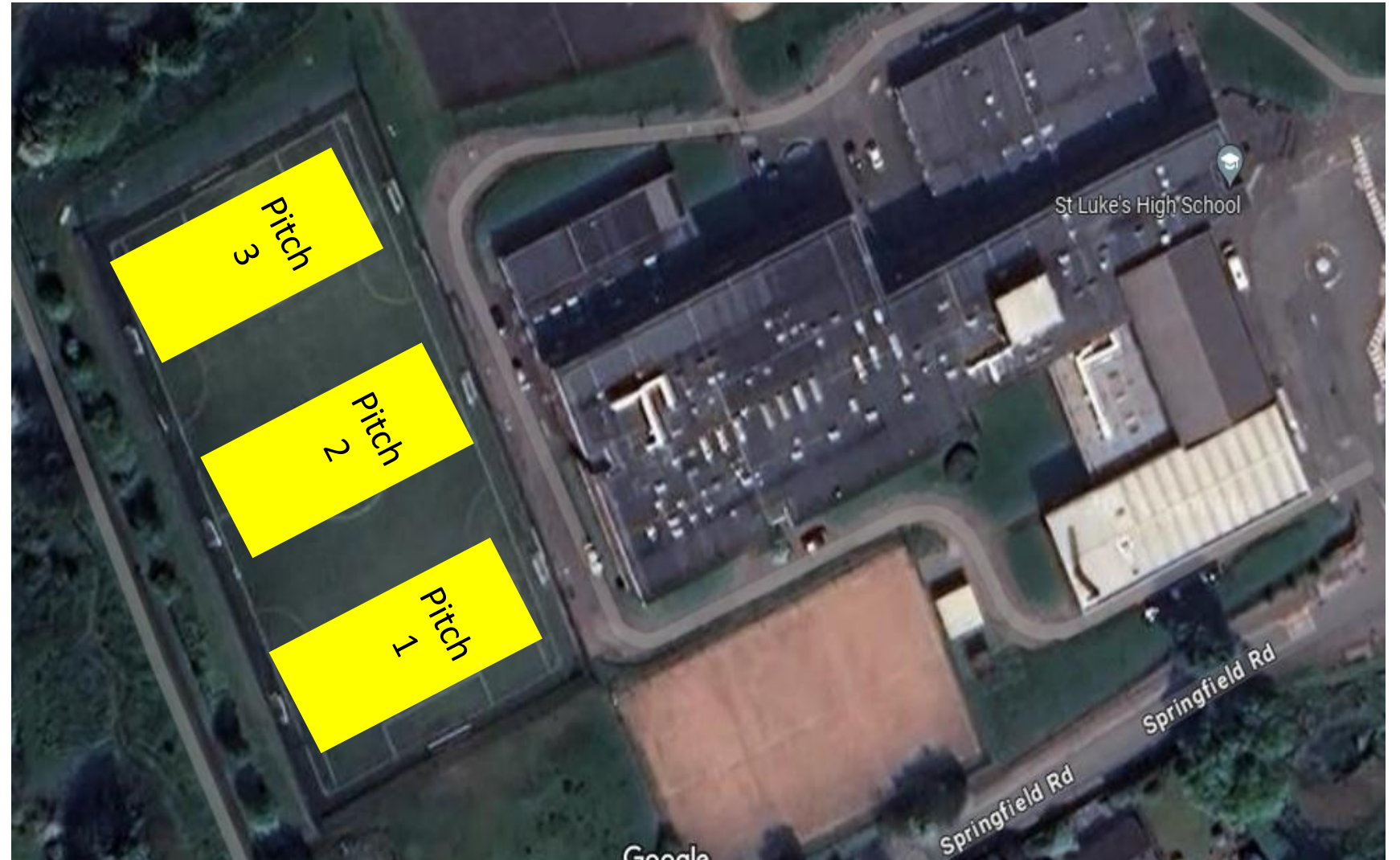
Venue Info

Age Group: 2015 / 2014

Game format: 7v7

Surface: Astro

Postcode: G78 2SG





ERSDA Pitch Map 2024: Cowan Park

Venue Info

Age Group: 2016 / 2015 / 2014

Game format: 5v5 / 7v7

Surface: Grass Pitches

Postcode: G78 2SJ





ERSDA Pitch Map 2024: Woodfarm Astro

Venue Info

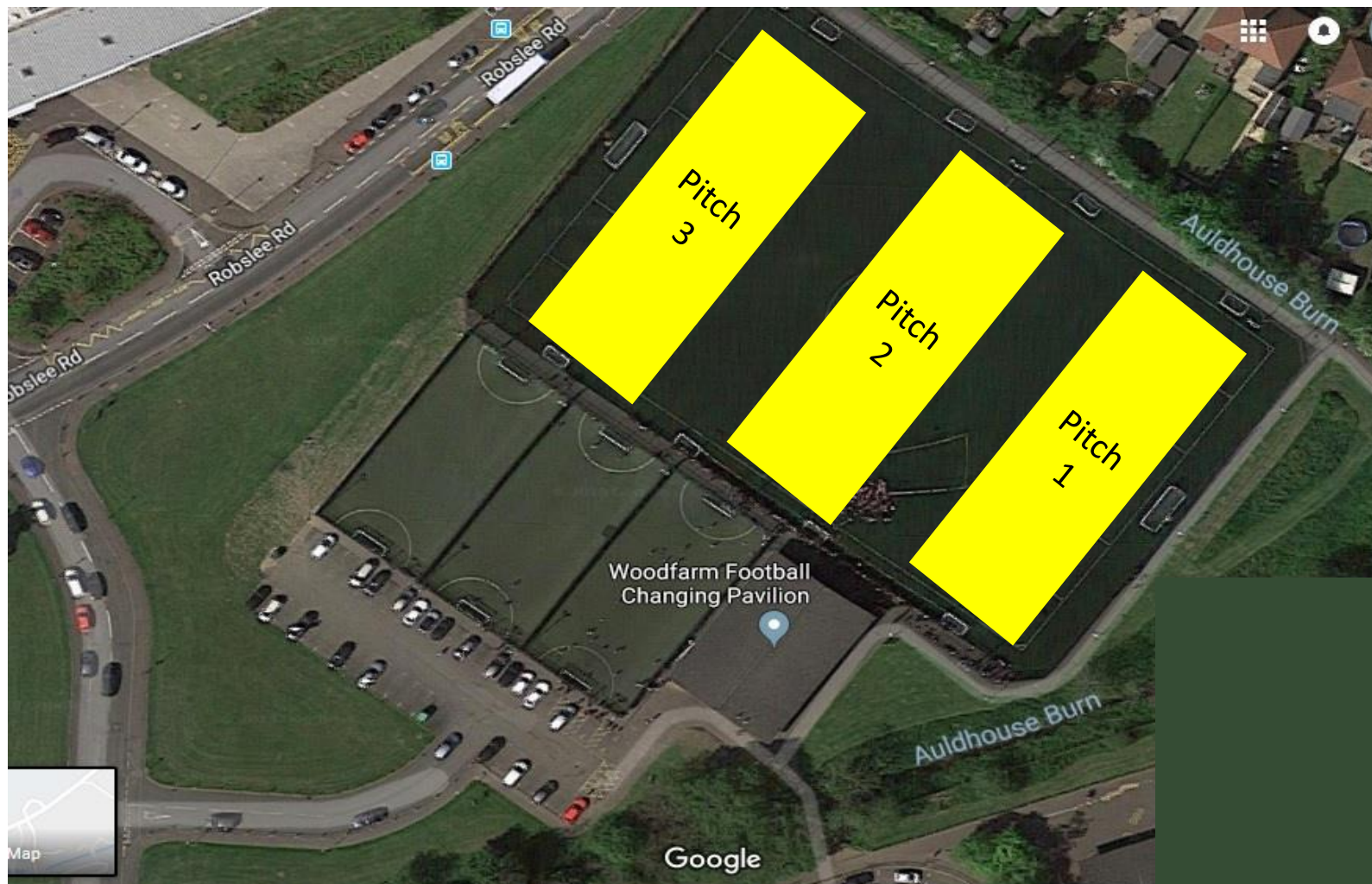
Age Group: 2015

Game format: 7v7

Surface: Astro

Postcode: G46 7HG

(NB. Woodfarm is used only between 12 and 1pm for 7-a-side... it is used for fun 4s from 9-12pm)





Format Guide – 2014

Where	St Luke's – Astro pitches (10-1pm) Cowan Park – Grass pitches (9-1pm)
When	Saturdays between 9am and 1pm for all games. A team's allocated time and location will vary– check the fixture schedule for details each week.
Details	<ul style="list-style-type: none">➤ 2014 games will be held on either Astro (St Luke's) or Grass pitches (Cowan Park)➤ Pitches are marked out using cones and 7-a-side size goals➤ Teams are assigned an hour slot which can change week on week as detailed in the fixtures➤ Games are 2x25 mins long.➤ Fun, encouragement and positivity is the order of the day!➤ At the end of a game, coaches may opt to do a penalty shoot out➤ All players must wear shin guards, wear a team strip or bib, and bring a drink➤ Coaches and supporters should follow the pitch set-up guide for where to stand at Cowan Park➤ At St Luke's, supporters should also remain outside the cage at all times➤ Toilet facilities are available at both venues➤ Please park responsibly when attending Cowan Park – it gets busy at matchday and it is crucial that access routes remain open. Do not park on Dubbs Road to avoid receiving a parking ticket.➤ Note that the Aurs Road will be closed this season at the Dams. Please plan additional time for the journey and expect additional busyness for Cowan and St Luke's



ERSDA Pitch Map 2024: St Luke's HS

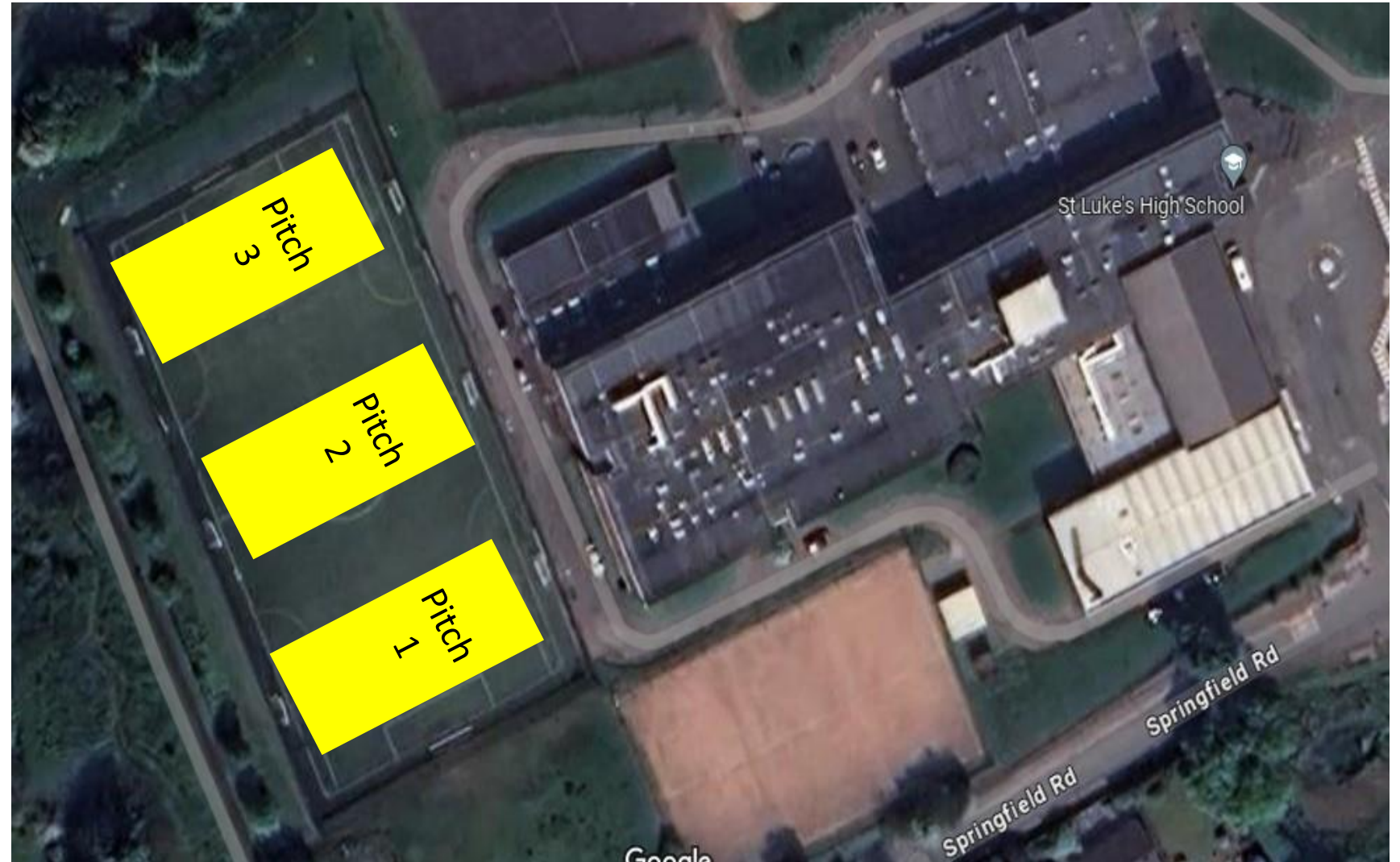
Venue Info

Age Group: 2015 / 2014

Game format: 7v7

Surface: Astro

Postcode: G78 2SG





ERSDA Pitch Map 2024: Cowan Park

Venue Info

Age Group: 2016 / 2015 / 2014

Game format: 5v5 / 7v7

Surface: Grass Pitches

Postcode: G78 2SJ





Format Guide – 2013

Where	Muirend – Grass pitches (9-1pm)
When	Saturdays between 9am and 1pm for all games. A team's allocated time will vary– check the fixture schedule for details each week.
Details	<ul style="list-style-type: none">➤ 2013 games will be held on grass pitches at Muirend➤ Pitches are marked out using cones and 7-a-side size goals➤ Teams are assigned an hour slot which can change week on week as detailed in the fixtures➤ Games are 2x25 mins long.➤ Fun, encouragement and positivity is the order of the day!➤ At the end of a game, coaches may opt to do a penalty shoot out➤ All players must wear shin guards, wear a team strip or bib, and bring a drink➤ Coaches and supporters should follow the pitch set-up guide for where to stand at Muirend➤ Toilet facilities are available in the pavilion



ERSDA Pitch Map 2024: Muirend PF

Venue Info

Age Group: 2013 / 2012

Game format: 7v7 / 9v9

Surface: Grass

Postcode: G44 3HQ





Format Guide – 2012

Where	Muirend – Grass pitches (9-1pm) Overlee - Grass pitches (9-1pm)
When	Saturdays between 9am and 1pm for all games. A team's allocated time and location will vary– check the fixture schedule for details each week.
Details	<ul style="list-style-type: none">➤ 2012 games will be held on grass pitches at Muirend or Overlee➤ Pitches are marked out using cones and 7/9-a-side size goals➤ The games are refereed. The fee per game is £36 in total, split equally between teams. Teams should bring £18 each, and pay this to the referee in advance of kick-off➤ Teams are assigned an hour slot which can change week on week as detailed in the fixtures➤ Games are 2 equal halves, with a half time, within the allocated hour pitch slot. The referee will control game time.➤ The referee will support players and coaches in adapting to new game rules, and at their discretion may allow 'retakes' of game activities such as throw-ins or corners to enable learning.➤ Fun, encouragement and positivity is the order of the day!➤ All players must wear shin guards, wear a team strip or bib, and bring a drink➤ Coaches and supporters should follow the pitch set-up guide for where to stand at both venues➤ Toilet facilities are available in both pavilions



ERSDA Pitch Map 2024: Muirend PF

Venue Info

Age Group: 2013 / 2012

Game format: 7v7 / 9v9

Surface: Grass

Postcode: G44 3HQ





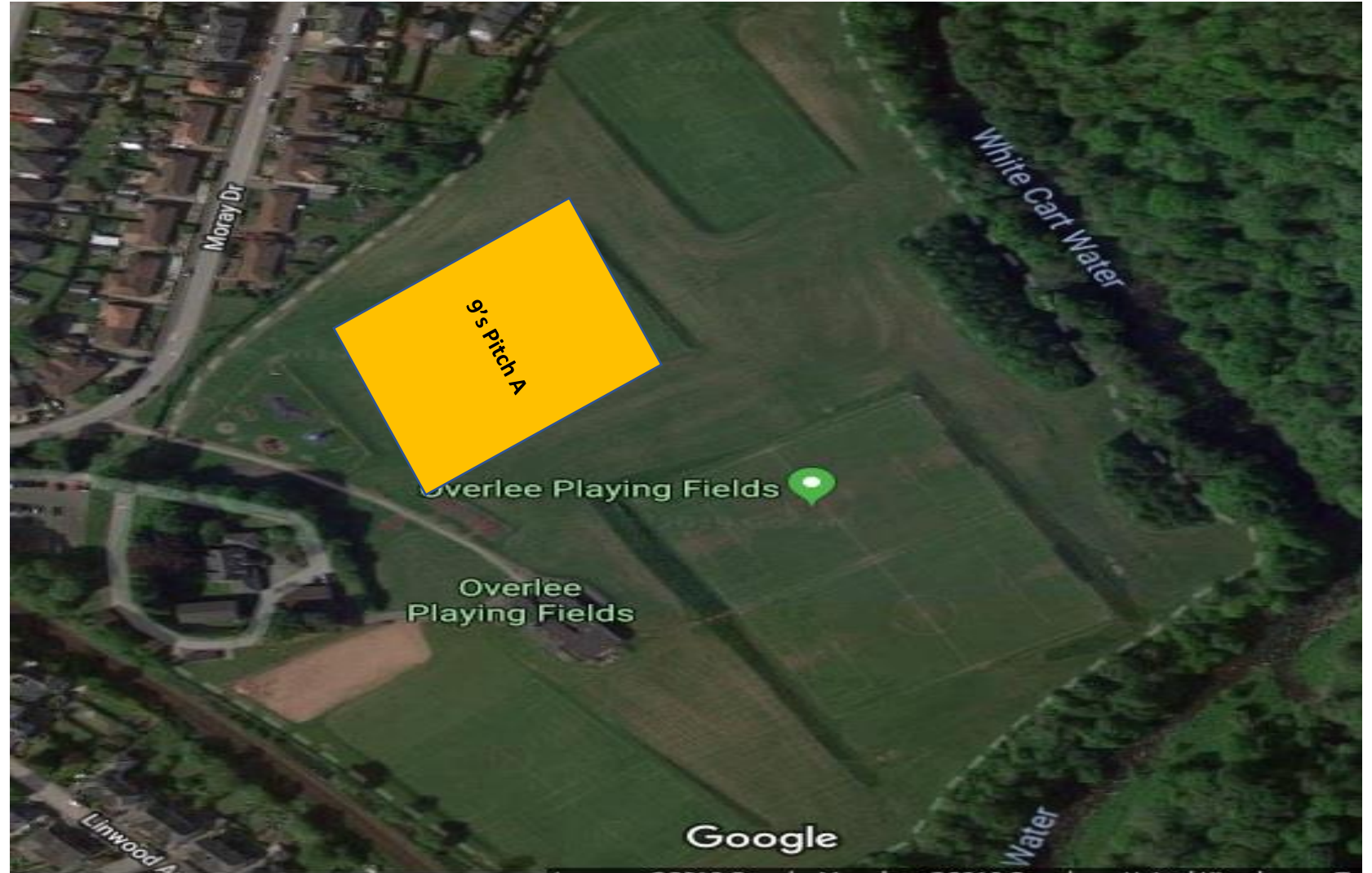
ERSDA Pitch Map 2024: Overlee PF

Venue Info

Age Group: 2012's

Game format: 9v9

Surface: Grass





SWF Format Guide – U7s

Where	Eastwood High School – Astro pitches only
When	Sunday Mornings - Fixtures and timings shared the week in advance on coaches' whatsapp Key contact- Roslynn Davidson
Details	<ul style="list-style-type: none">➤ All U7s games are held on the astro football pitch at Eastwood High School - G77 6NQ➤ Pitches are marked out using cones and fun 4 size goals➤ Games are 10 mins long, with 4 mins in between to go to the next game➤ An ERSDA venue coordinator will use a hooter to let you know when to start and stop games➤ At the end of a game, high five the opposition and then go straight to next pitch before team talks➤ When the ball goes over the touchline it is an opposition dribble or kick-in – see National Player Pathway guidelines➤ There is no referee – coaches collaborate to ensure the game rules are followed➤ All players must wear shin guards, wear a team strip or bib, and bring a drink➤ Coaches should not stand directly behind the goals➤ All supporters to remain outside the pitch cage at all times➤ The school has changing rooms and toilet facilities➤ Fun, encouragement and positivity is the order of the day!



SWF Format Guide – U8s

Where	Eastwood High School – Astro pitches only
When	Sunday Mornings - Fixtures and timings shared the week in advance on coaches' whatsapp Key contact- Roslynn Davidson
Details	<ul style="list-style-type: none">➤ All U8s games are held on the astro football pitch at Eastwood High School - G77 6NQ➤ Pitches are marked out using cones and 5-a-side size goals➤ Teams are assigned an hour slot which can change week on week➤ Games are 15 mins long, with 5 mins in between to go to the next game pitch➤ Fun, encouragement and positivity is the order of the day!➤ An ERSDA venue coordinator will use a hooter to let you know when to start and stop games➤ At the end of a game, high five the opposition and then go straight to next pitch before team talks➤ All players must wear shin guards, wear a team strip or bib, and bring a drink➤ Coaches should not stand directly behind the goals➤ All supporters to remain outside the pitch cage at all times➤ The school has changing rooms and toilet facilities➤ Fun, encouragement and positivity is the order of the day!



SWF Format Guide – U10s

Where	Eastwood High School – Astro pitches only
When	Sunday Mornings - Fixtures and timings shared the week in advance on coaches' whatsapp Key contact- Roslynn Davidson
Details	<ul style="list-style-type: none">➤ All U10s games are held on the astro football pitch at Eastwood High School - G77 6NQ➤ Pitches are marked out using cones and 7-a-side size goals➤ Teams are assigned an hour slot which can change week on week as detailed in the fixtures➤ Games are 2 x 20-25 mins long.➤ At the end of a game, coaches may opt to do a penalty shoot out➤ All players must wear shin guards, wear a team strip or bib, and bring a drink➤ Coaches should not stand directly behind the goals➤ All supporters to remain outside the pitch cage at all times➤ The school has changing rooms and toilet facilities➤ Fun, encouragement and positivity is the order of the day!



ERSDA Pitches 2024: Eastwood HS (Sun)

Venue Info

Age Group: U7, U8, U10

Game format: 4v4 / 5v5 / 7v7

Varies according to time slot

Surface: Astro

**Capelrig Rd, Newton Mearns, Glasgow
G77 6NQ**

